



# **PM over Europe**

**from measurement to modelling  
from sources to exposure**

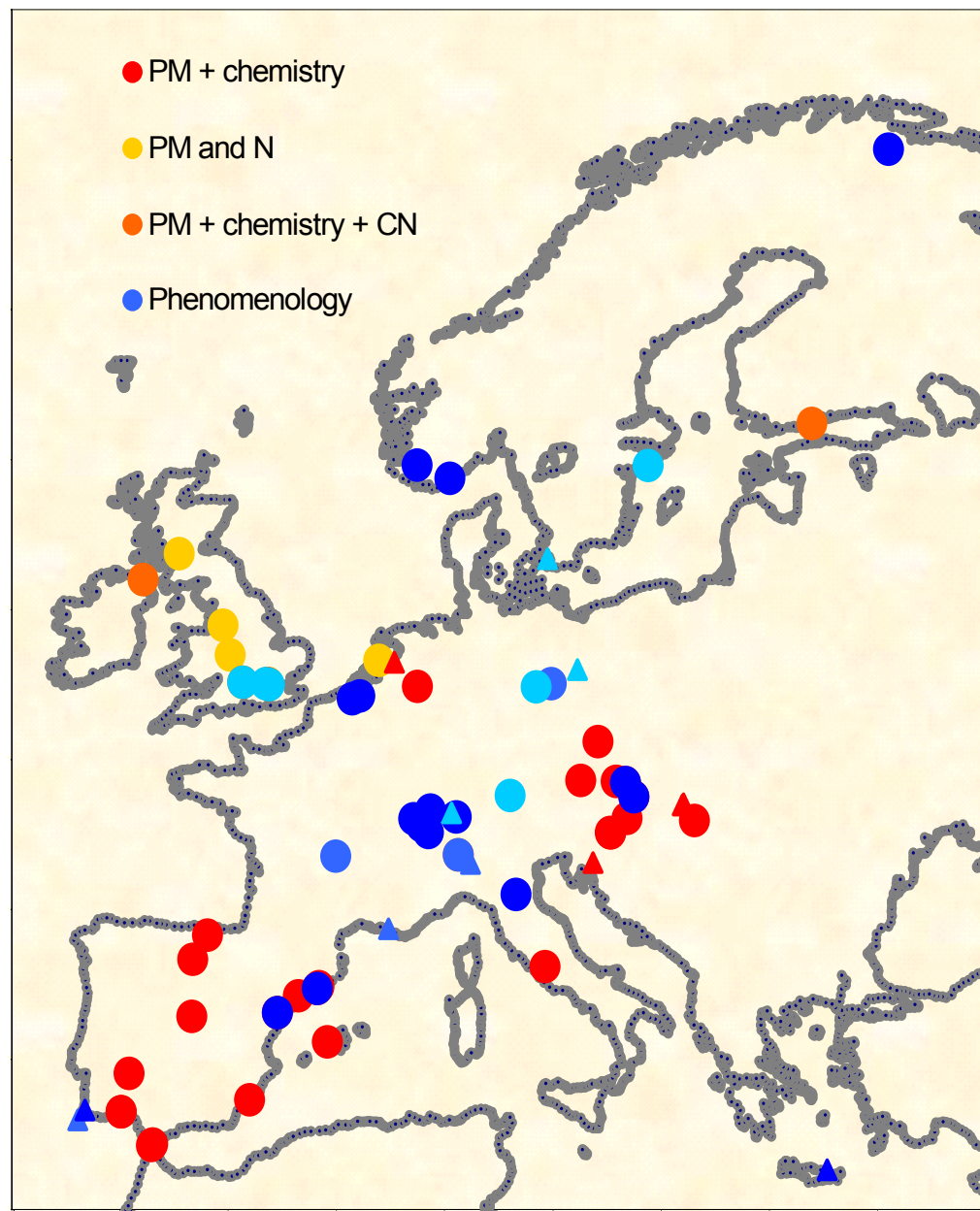
***T.A.J. Kuhlbusch, A. Miranda, M. Viana,  
J.-P. Putaud, W. Winiwarter, C. Borrego,  
M. Jicha, M. Ketzel,  
and COST 633 Members***

**Particulate matter and health in 2020: Are we on the right track?**

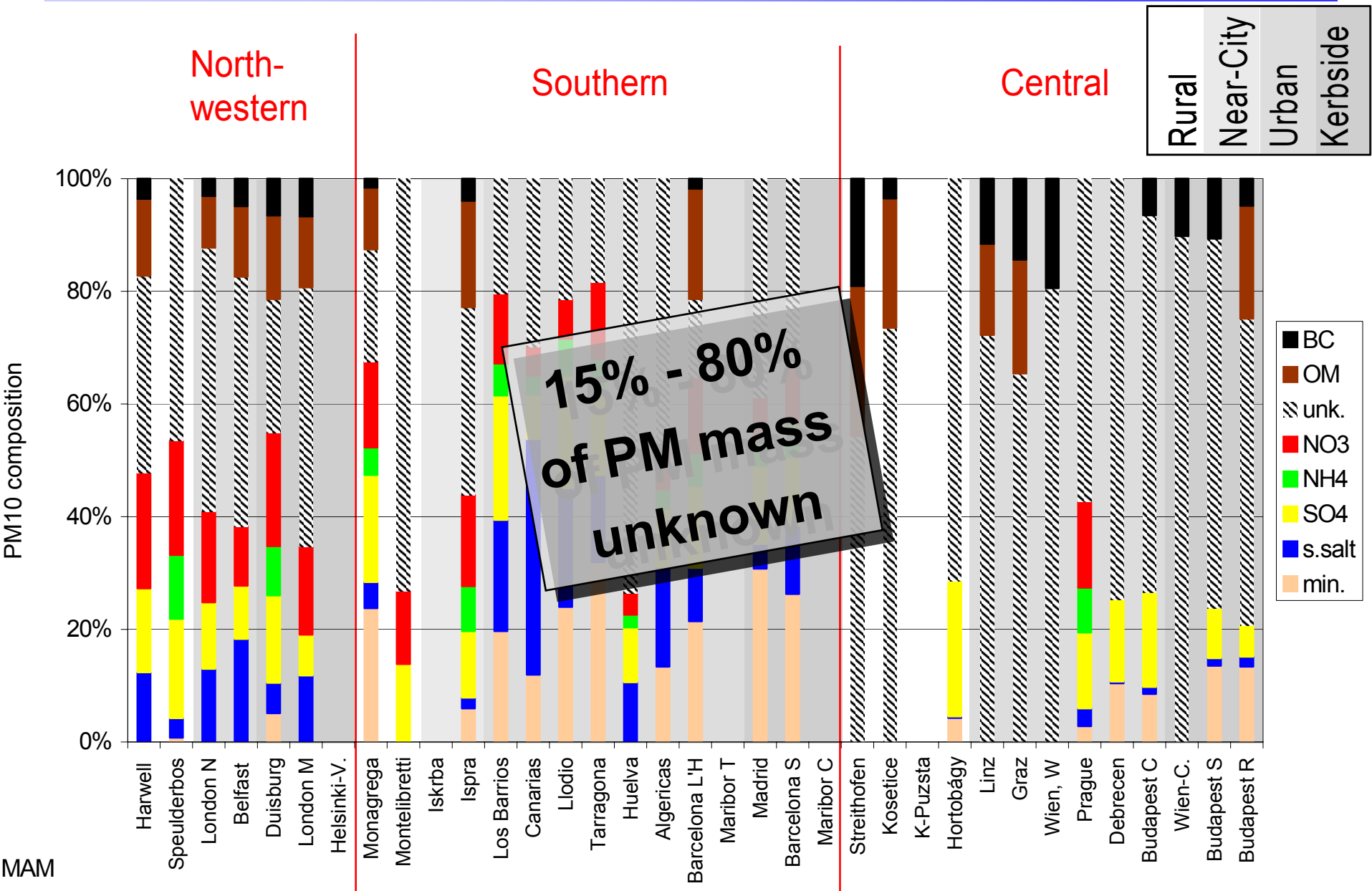
**Brussels, 13th-14th March 2008**

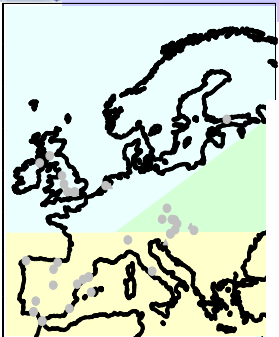
- 1. Measurements over Europe – Mass concentrations, chemical composition, particle size distributions**
- 2. What can be modeled? What is modeled?**
- 3. Sources – Emission inventories and source apportionment**
- 4. Measurement, modeling, and sources – linkage to exposure?  
(PM2.5 approach! Current Epi! New Epi! Tox!)**
- 5. Is this all?  
Other stressors and  
Particle characteristics (ROS.....)**

- **1<sup>st</sup> Phenomenology: 34 sites**
  
- **COST633: 50 original data sets**
  - **35 with PM and chemistry**
  - **15 with PM and CN number**



# PM 10 – Composition over Europe

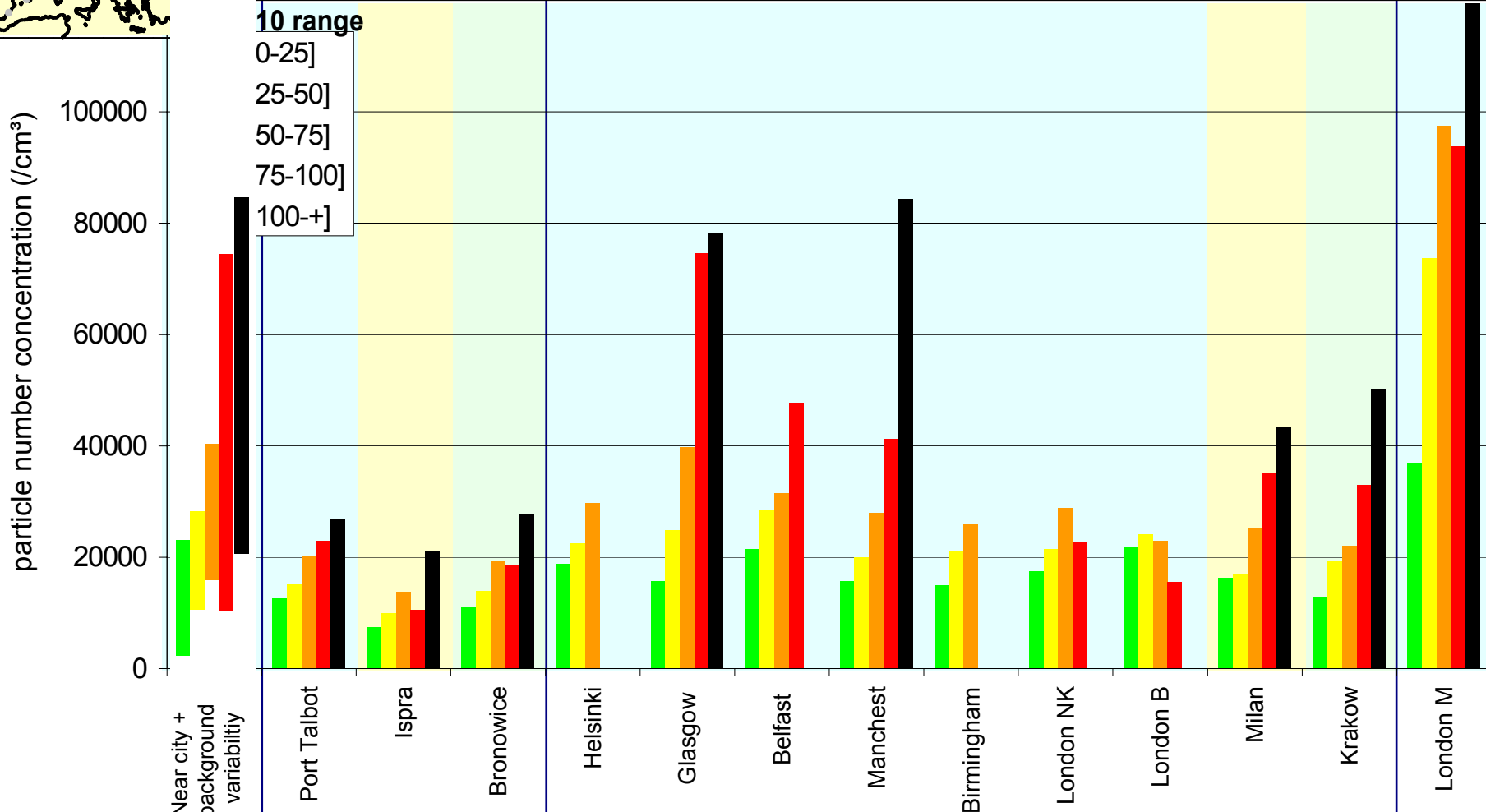




Near-City

Urban background

Kerbside



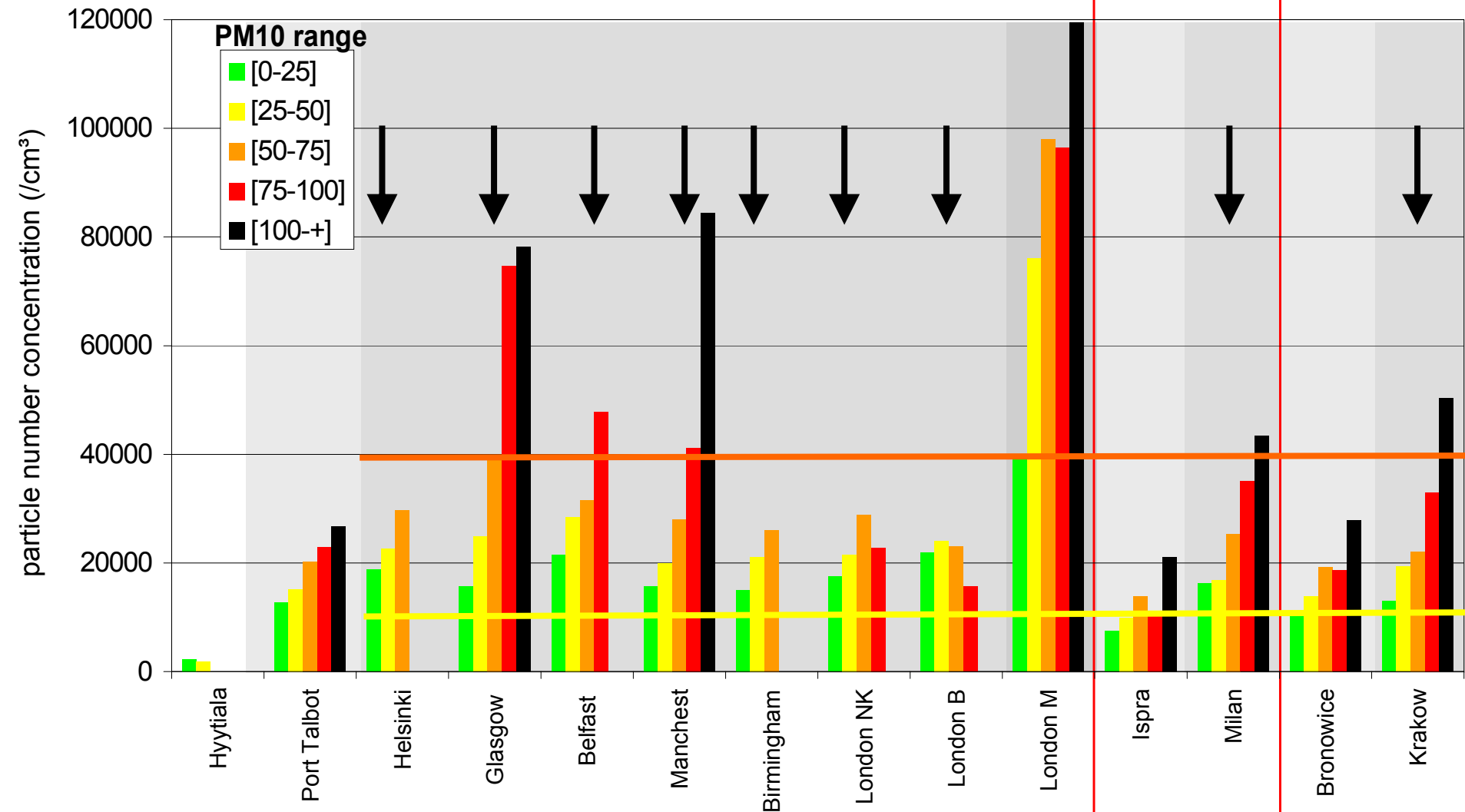
# PM – Number concentrations over Europe

Rural	Near-City	Urban	Kerbside
-------	-----------	-------	----------

North-western

Southern

Central



# PM 10 – Average of main aerosol constituents



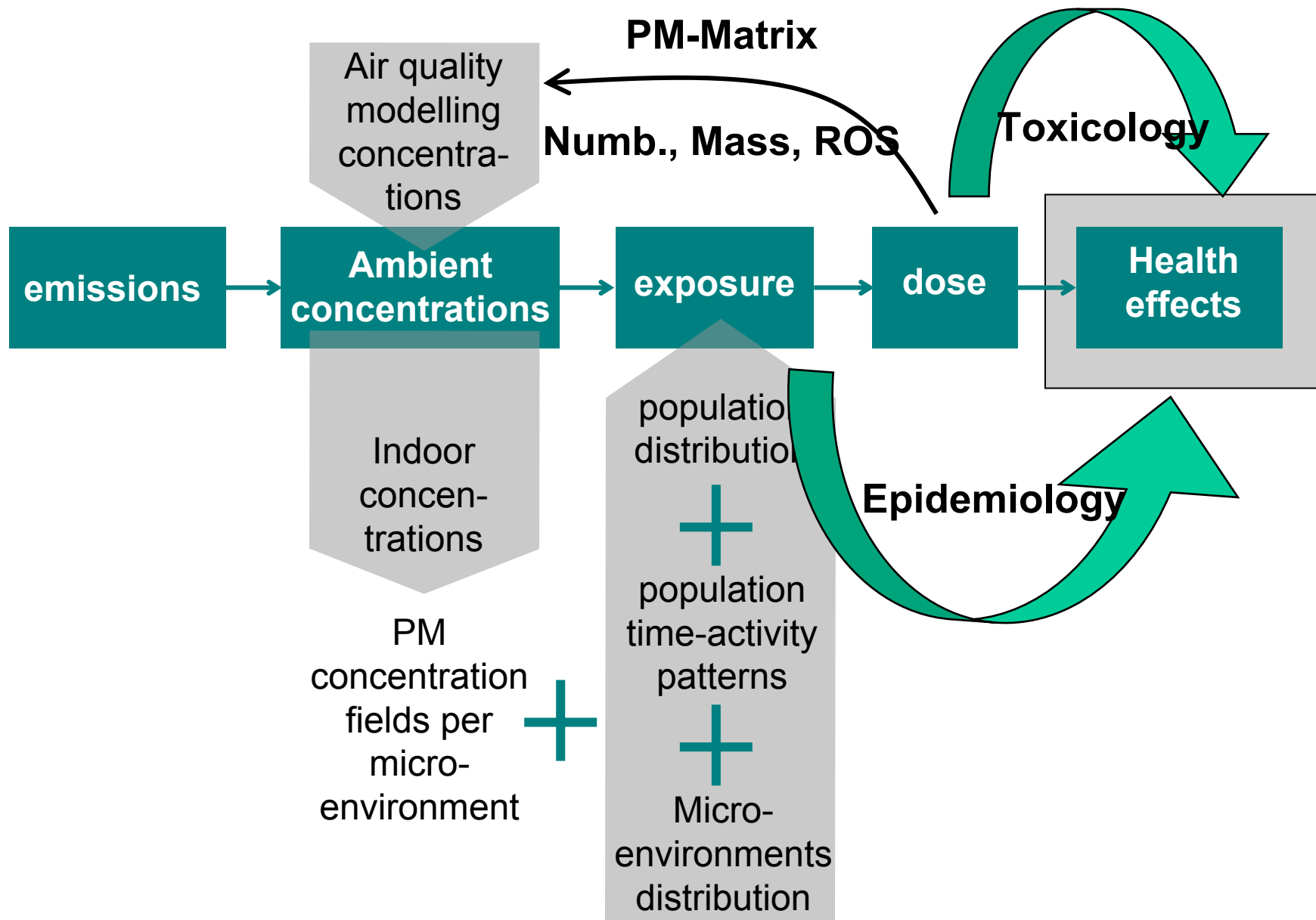
		rural	near-city	urban	kerbside
North Western Europe	min. dust	1%			
	sea salt	8%		15%	6%
	SO4	13%		9%	8%
	NO3	15%		11%	12%
	OM	15%		14%	14%
	EC	4%		5%	8%
	TC	14%		15%	18%
Southern Europe	min. dust	19%	9%	16%	19%
	sea salt	5%	10%	14%	6%
	SO4	16%	14%	12%	10%
	NO3	13%	10%	8%	6%
	OM	12%	32%	22%	
	EC	1%	5%	2%	
	TC	13%	21%	19%	27%
Central Europe	min. dust	4%		8%	
	sea salt	0.2%		0.3%	
	SO4	24%		15%	
	NO3				
	OM	28%		21%	
	EC	12%		16%	11%
	TC	27%		30%	

- Routine mass concentration data (PM10 and PM2.5) good and improving
- Information on main components of particles over Europe slowly become available. Efforts combining data and using this knowledge are scarce
- Data on important, possibly health relevant particle compounds and characteristics is still scarce



- 1. Measurements over Europe – Mass concentrations, chemical composition, particle size distributions**
- 2. What can be modeled? What is modeled?**

# PM – Emission / Modelling / Exposure



## Overview of the application of PM models in European COST633 Action member countries –

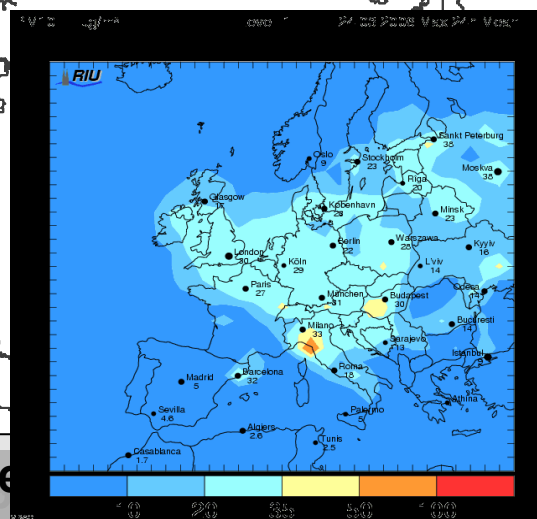
### Aim case-study oriented summary

Answer Country	Case Study	Model used + web page	PM modelling		Time resolution	Spatial resolution	Domain	Validation	Contact Person	Available documents (papers, reports,...)	Other Info
			Primary	Secondary							
<b>Austria...</b>	✓										

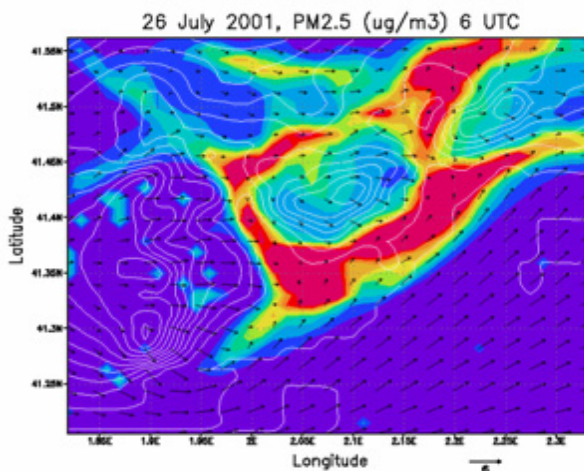
- 10 member countries replied reporting a total of 30 case studie applications.
- Primary aerosols simulated in all the cases, secondary aerosols included in 50% of the cases, estimating not only PM10, but also PM2.5 and SOA.
- Several models were applied, in a total of 20, with different scopes and covering different modelling scales, from the local (only simulating primary PM) to the regional scale.
- Validation work is associated to each reported case study.

# PM – Examples

**EURAD application  
for Europe –  
PM<sub>10</sub> forecast**  
(<http://www.eurad.uni-koeln.de>)

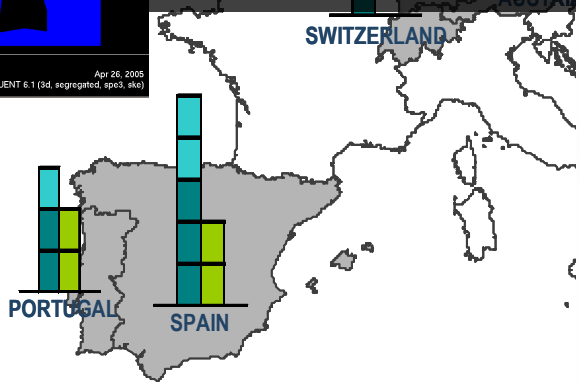
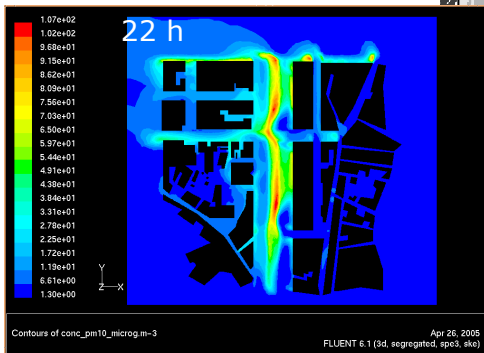


In general, member states are already simulating PM and using models as useful tools to air quality management, namely is what concerns the Air Quality Framework Directive.



**MM5-CMAQ  
application to  
Barcelona coast –  
PM<sub>2.5</sub> conc at 6h**  
(<http://www.bsc.es/>)

**FLUENT application  
to Av. Liberdade,  
Lisboa, Portugal –  
PM<sub>10</sub> conc at 22h**  
(Martins *et al.*, 2005)



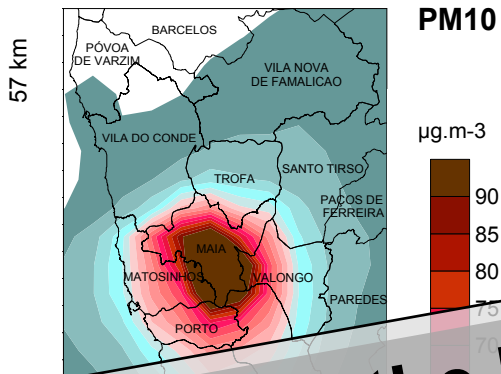
- 1 mesoscale model with Primary PM
- 1 mesoscale model with Primary and Secondary PM

# PM – Example of population exposure modelling



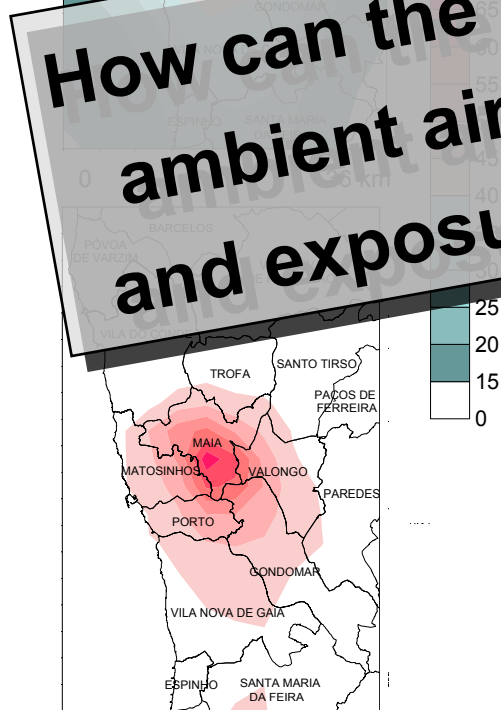
## Porto Metropolitan Area – regional scale modelling of populational exposure

Annual average concentration

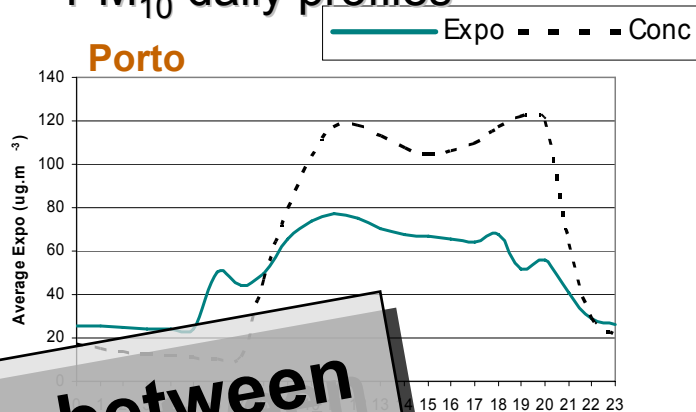


conc. and exposure fields

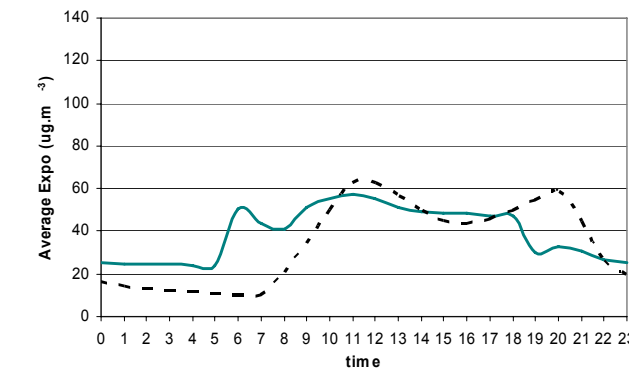
Annual average personal exposure



## PM<sub>10</sub> daily profiles



How can the linkage between ambient air measurements and exposure be improved?



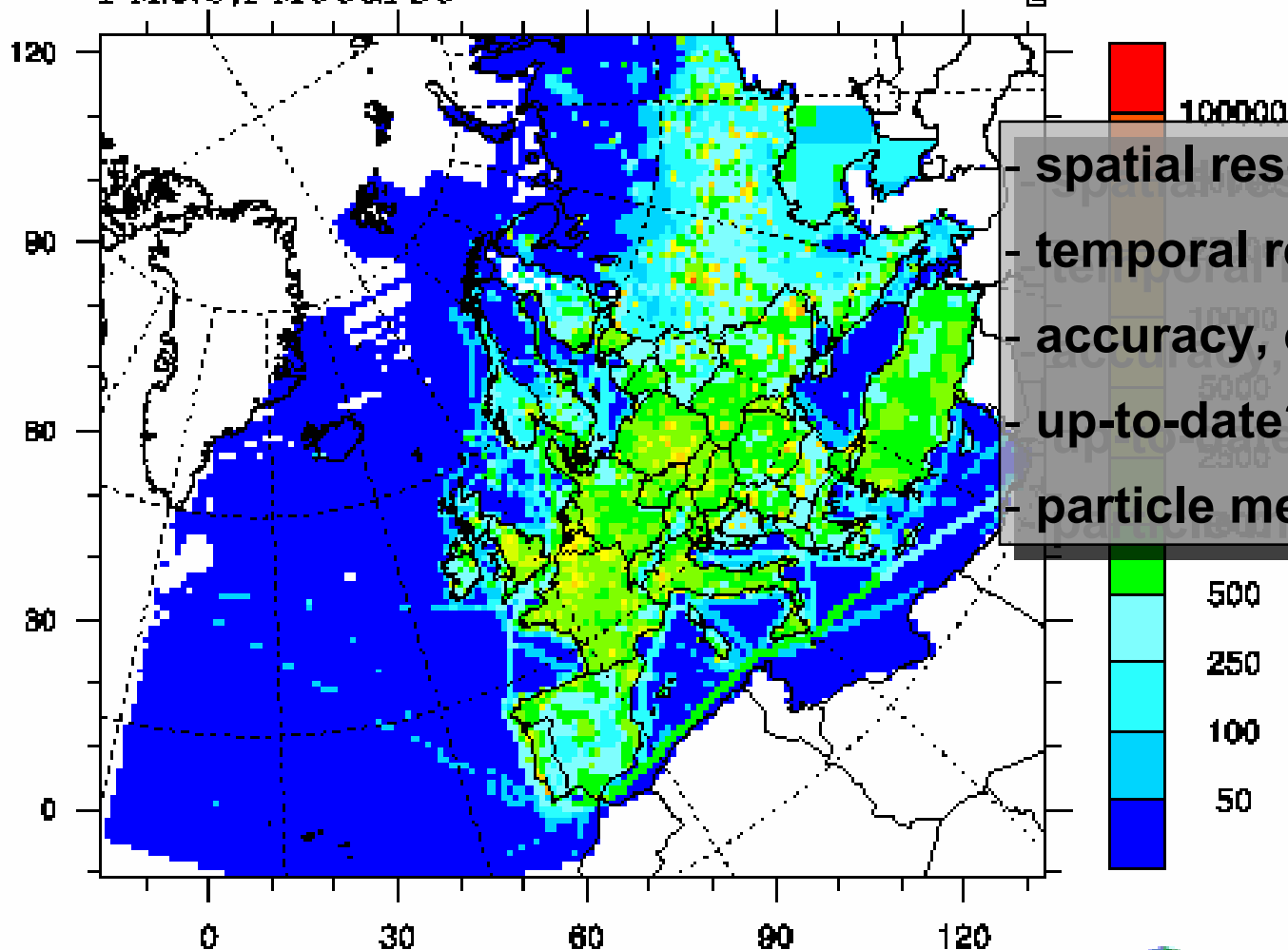
- quite a few models are in use over Europe covering different scales from local to global scale
- models used for assessing exposure to the various modeled parameters
- future improvements and research should hence focus on
  - a) validation of the models for areas over Europe (→ measurements)
  - b) studies of comparability of models at various scales for different regions in Europe (example City Delta Project)
  - c) including models for exposure assessments in epidemiological studies (short- and long- term → next presentation)
  - d) linking / improving source apportionment and model results for cross validation (→ SoAp, assessment of abatement strategies)

- 1. Measurements over Europe – Mass concentrations, chemical composition, particle size distributions**
- 2. What can be modeled? What is modeled?**
- 3. Sources – Emission inventories and source apportionment**

# PM – Emission inventories for modelling & source apportionment



2000 Emissions  
 S1,S2,S3,S4,S5,S6,S7,S8,S9,S10,S11  
 PM<sub>2.5</sub>,PM<sub>coarse</sub> Mg



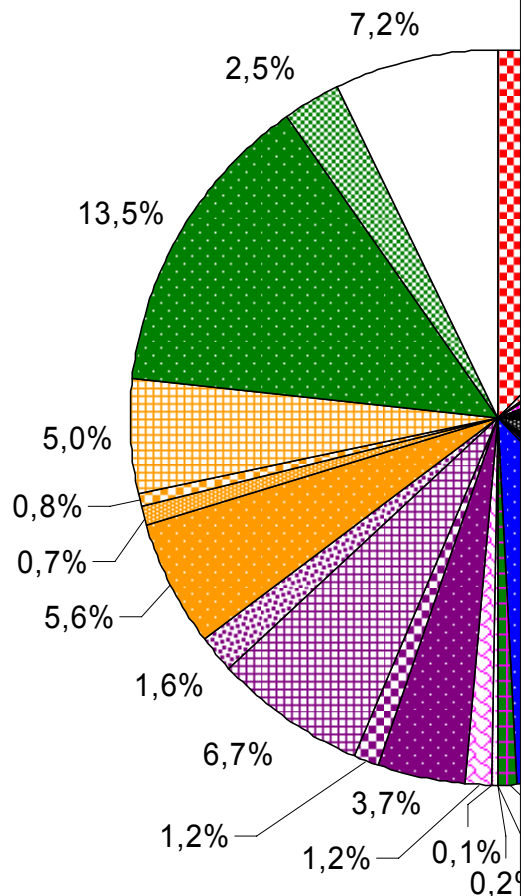
- spatial resolution
- temporal resolution
- accuracy, comparability?
- up-to-date?
- particle metric?



# PM10 Emission – source contributions

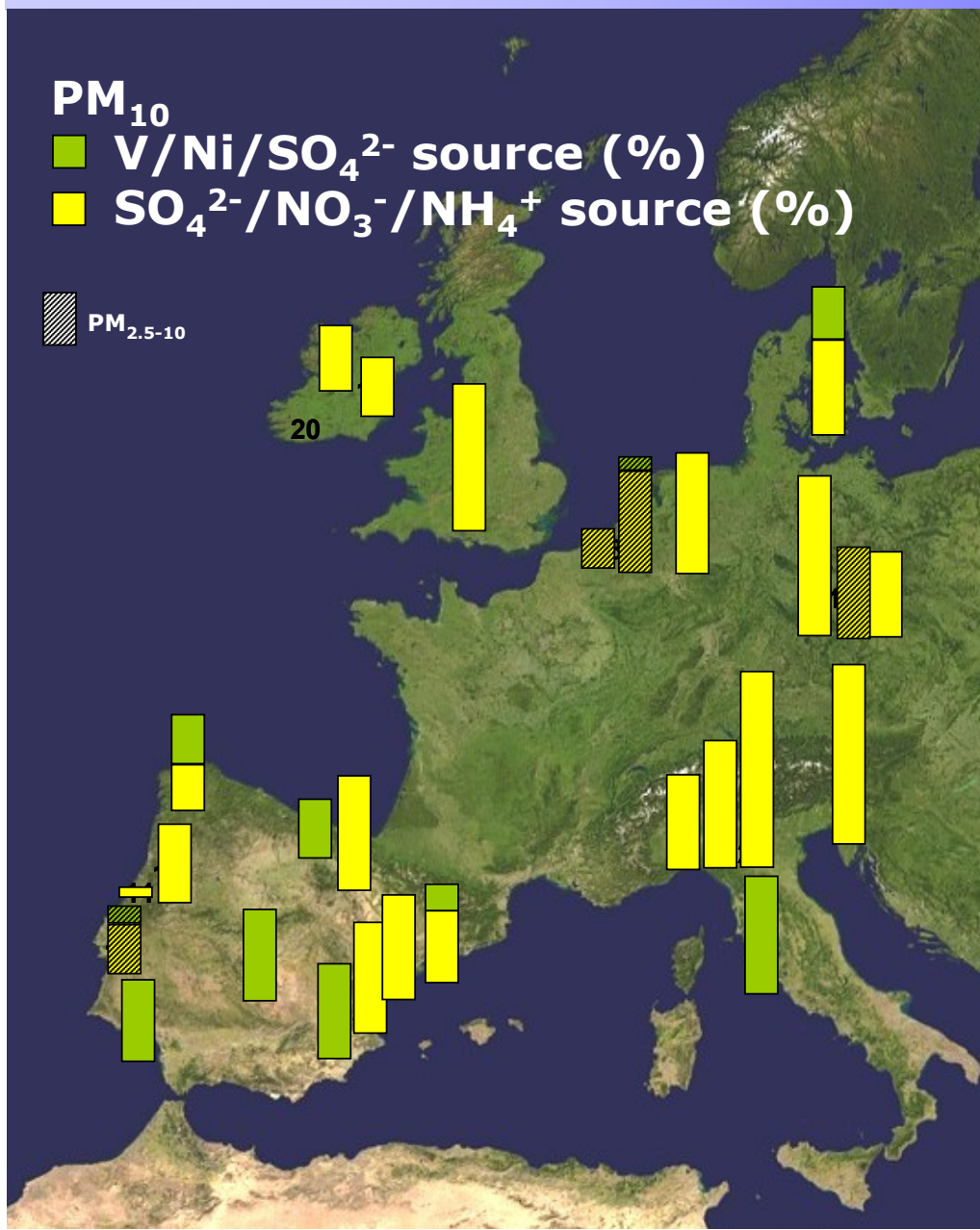


**PM10 – background concentration**  
**9.4 µg/m<sup>3</sup>**



- 1 A 1 a Public Electricity and Heat Production
- 1 A 1 b Petroleum refining
- 1 A 1 c Manufacturing of Solid Fuels and Other Energy Industries
- 1 A 2 Manufacturing Industries and Construction
- 1 A 3 a ii (i) Civil Aviation (Domestic, LTO)
- 1 A 3 a ii (ii) Civil Aviation (Domestic, Cruise)
- 1 A 3 b Road Transportation
- 1 A 3 b i R.T., Passenger cars
- 1 A 3 b ii R.T., Light duty vehicles
- 1 A 3 b iii R.T., Heavy duty vehicles
- 1 A 3 b iv R.T., Mopeds & Motorcycles
- 1 A 3 b v R.T., Gasoline evaporation
- 1 A 3 b vi R.T., Automobile tyre and brake wear
- 1 A 3 b vii R.T., Automobile road abrasion
- 1 A 3 c Railways
- 1 A 3 d ii National Navigation
- 1 A 3 e Other (Please specify in a covering note)
- 1 A 4 a Commercial / Institutional
- 1 A 4 b Residential
- 1 A 4 c Agriculture / Forestry / Fishing
- 1 A 5 a Other, Stationary (including Military)
- 1 A 5 b Other, Mobile (Including military)
- 1 B 1 Fugitive Emissions from Solid Fuels
- 1 B 2 Oil and natural gas
- 2 A MINERAL PRODUCTS
- 2 B CHEMICAL INDUSTRY
- 2 C METAL PRODUCTION
- 2 D OTHER PRODUCTION
- 2 G OTHER (Please specify in a covering note)
- 3 A PAINT APPLICATION
- 3 B DEGREASING AND DRY CLEANING
- 3 C CHEMICAL PRODUCTS, MANUFACTURE AND PROCESSING
- 3 D OTHER including products containing HMs and POPs (Please specify in a covering note)
- 4 B MANURE MANAGEMENT
- 4 C RICE CULTIVATION
- 4 D 1 Direct Soil Emission
- 4 F FIELD BURNING OF AGRICULTURAL WASTES
- 4 G OTHER
- 5 B FOREST AND GRASSLAND CONVERSION
- 6 A SOLID WASTE DISPOSAL ON LAND
- 6 B WASTE-WATER HANDLING
- 6 C WASTE INCINERATION
- 6 D OTHER WASTE
- 7 OTHER

# PM – Source contributions and definitions



Regional-scale, Transport, 2<sup>ary</sup> part., Oil comb., Industry, etc.

-Extremely difficult to discriminate between these two sources:

- Secondary particles
- Long residence time
- Anthropogenic emissions
- Large subjectivity in interpretation by authors

-PM<sub>10</sub>: no clear spatial pattern  
 - 15-40% SO<sub>4</sub><sup>2-</sup>/NO<sub>3</sub><sup>-</sup>/NH<sub>4</sub><sup>+</sup>  
 - 10-30% V/Ni/SO<sub>4</sub><sup>2-</sup>

-PM<sub>2.5</sub>: no clear spatial pattern  
 - 20-60% SO<sub>4</sub><sup>2-</sup>/NO<sub>3</sub><sup>-</sup>/NH<sub>4</sub><sup>+</sup>  
 - 10-30% V/Ni/SO<sub>4</sub><sup>2-</sup>

- 1. Inter-comparison of source apportionment methods**
- 2. Receptor modelling of particle size distribution data**
- 3. Source apportionment analysis of specific PM fractions:**
  - a) C aerosols using  $^{14}\text{C}$**
  - b) Natural sources: mineral dust (windblown, African dust)**
  - c) Primary vs. secondary organic aerosols**
  - d) Anthropogenic sources (e.g. shipping emissions, diesel vs. gasoline)**
- 4. Receptor modelling for epidemiological and health-related studies**
- 5. Source apportionment of indoor air and relation to exposure**

- **Emission inventory for various particle parameters are needed**
- **Emission inventory (incl. chemistry) data and models needed to relate the source apportionment studies with model results**
- **Partially comparable, partially total different results of source apportionment studies over Europe**
- **Source factors as derived in the various studies are not directly comparable**
- **Source apportionment data coverage over Europe is sparse**
- **Source data coverage for different size fractions is even less**

- 1. Measurements over Europe – Mass concentrations, chemical composition, particle size distributions**
- 2. What can be modeled? What is modeled?**
- 3. Sources – Emission inventories and source apportionment**
- 4. Measurement, modeling, and sources – linkage to exposure?  
(PM2.5 approach! Current Epi! New Epi! Tox!)**

- **exposure → dose and investigating possible linkages to health ‘end points’ is the mayor approach used in epidemiology**
- **the more precise the exposure assessment the better the possible association to health effects**
- **current approaches based on mass of PM have shown their value but also their limitations in explaining effects, either by epidemiological or toxicological studies**
- **new approaches expressing exposure is needed (see also list of particle parameters next presentation)**
- **new approaches may be based on**
  - **particle sources**
  - **reactivity (ROS)**
  - **particle surface area / number concentration**
  - **.....**

- 1. Measurements over Europe – Mass concentrations, chemical composition, particle size distributions**
- 2. What can be modeled? What is modeled?**
- 3. Sources – Emission inventories and source apportionment**
- 4. Measurement, modeling, and sources – linkage to exposure?  
(PM2.5 approach! Current Epi! New Epi! Tox!)**
- 5. Is this all?  
Other stressors and  
Particle characteristics (ROS.....)**

## 5. Is this all?



- **Several parameters linked to air quality and health effects have to be studied, e.g. ROS, UFP, source related effects...**
- **Effects can not be seen independently from other factors / stressors influencing human health, e.g. noise, climate, water quality....**
- **Nevertheless major effects (→ efforts) are currently linked to air quality / PM and further improvements in scientific understanding and subsequent improved abatement strategies.**
- **Measurements, exposure research with tox and epi research taking into account the European heterogeneity is an activity urgently needed for Europe.**
  - ➔ **Environment & Health Research Platforms**