



ILMATIETEEN LAITOS  
METEOROLOGISKA INSTITUTET  
FINNISH METEOROLOGICAL INSTITUTE

# Organic aerosols in relation to small-scale wood combustion, forest fires and traffic

R. Hillamo, S. Saarikoski, H. Timonen, K. Saarnio, A. Frey, M. Aurela

Finnish Meteorological Institute, Helsinki, Finland

L. Järvi, M. Kulmala

University of Helsinki, Helsinki, Finland



# Measurements

## Site

- **SMEAR III** (60°20'N, 24°97'E), urban background
- Local sources: traffic, biomass combustion
- Long-range transport ~50% of PM<sub>2.5</sub>, frequent wild fire plumes

## Period shown here

- June 2006–February 2007

**SMEAR III** belongs to the European ACCENT network  
– access to field and laboratory infrastructures





# Identification of sources –different approaches

## Time resolution 24-48 h

- Needs long-term measurements + large sets of chemical components → seasonal (annual) cycles

## Time resolution < 3 h (for several components)

- Diurnal variations, good timing for specific episodes (pollution or clean)
- Excellent data for modellers, epidemiological studies and for statistical methods (e.g. PMF)

## Same observations at several sites

- Helsinki (urban)
- Hyytiälä (rural forest)



# Methods

## **Sampling (24 h)**

- PM<sub>1</sub> filter sampling (80 lpm, 47 mm filter)
- Analytical techniques: IC, TOC, LC/MS, TOT (Sunset lab)

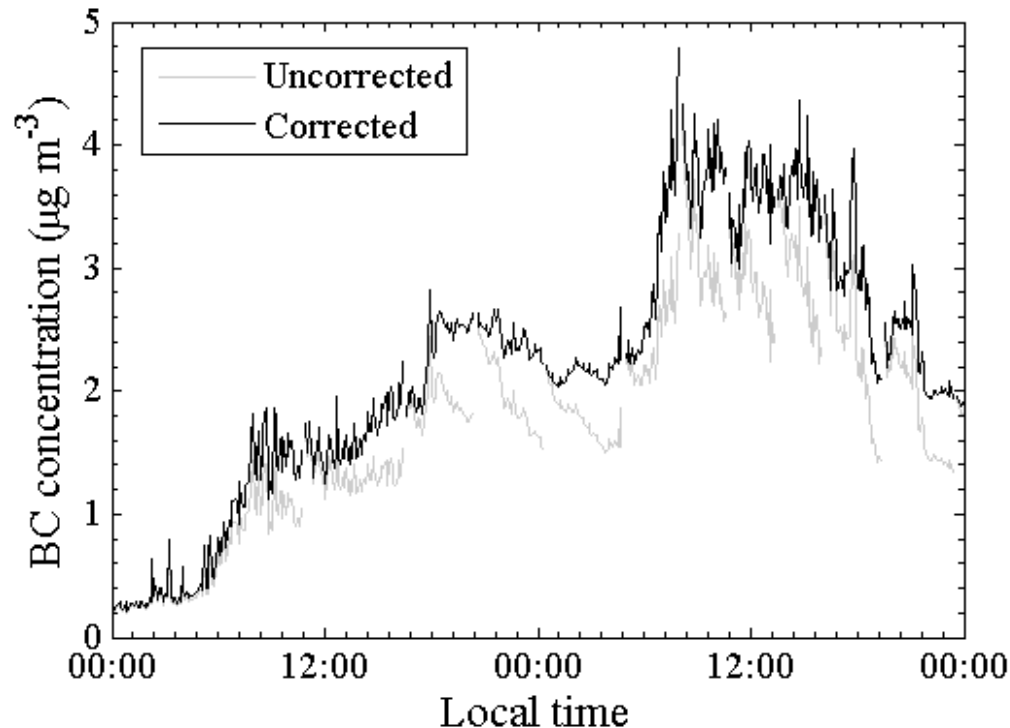
## **Online/real-time (1 s – 3 h)**

- PILS-IC for ions (15 min)
- PILS-Total organic carbon analyzer for WSOC (5 min)
- Semicontinuous EC/OC (Sunset Lab, 1-3 h)
- Aethalometer (black carbon, 5 min)
- PSAP (aerosol absorption, 1 s)
- Twin-TEOM (PM<sub>1</sub>, PM<sub>1-10</sub>, 30 min)
- DMPS, APS (particle number size distribution, 10 min)
- O<sub>3</sub>, NO<sub>x</sub>, CO
- Meteorology

## **Site comparison (Helsinki/urban – Hyytiälä/rural, distance 200 km)**



# Black carbon (soot) data from Helsinki 1996-2005



- Correction of BC data (Virkkula et al., 2007)
- Selection of periods to be compared (1996-1997, 2000-2001, 2004-2005)

Virkkula et al. (2007) A Simple Procedure for Correcting Loading Effects of Aethalometer Data, *J. Air & Waste Manage. Assoc.* **57**:1214–1222



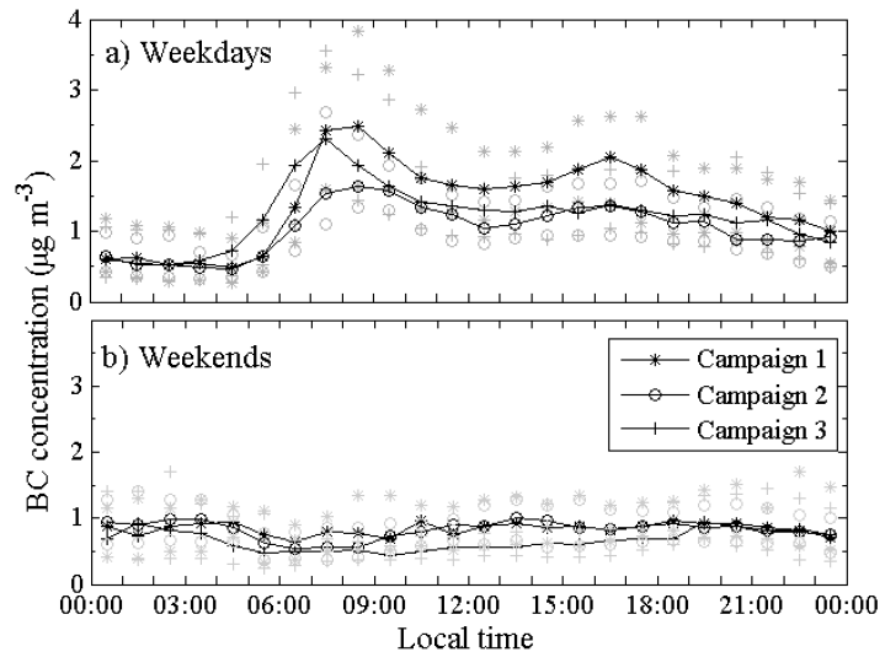
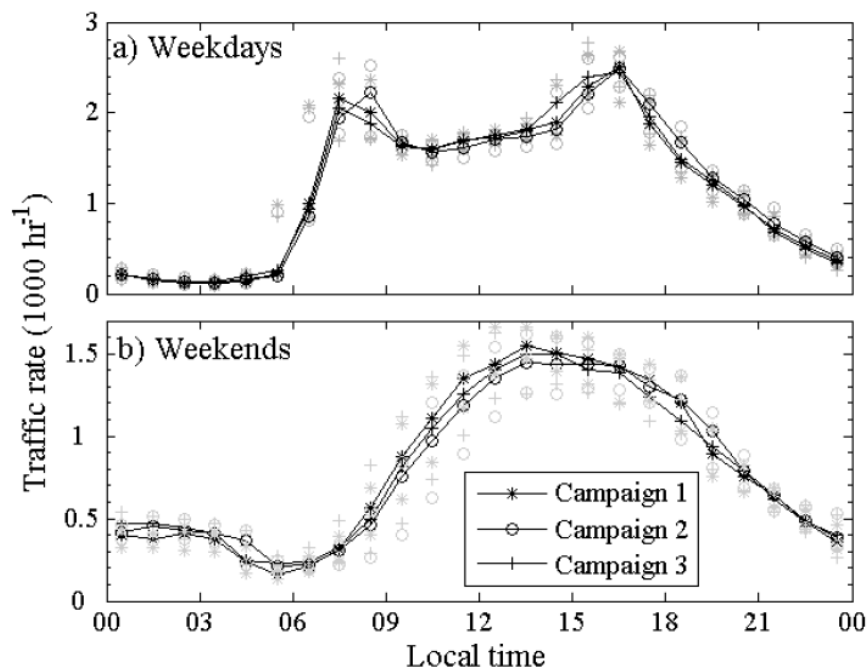
## Black carbon (PM<sub>2.5</sub>) in Helsinki 1996-2005: concentrations (µg/m<sup>3</sup>) during comparable periods

<b>Period</b>	<b>Campaign 1 (1996 - 1997)</b>	<b>Campaign 2 (2000 - 2001)</b>	<b>Campaign 3 (2004 - 2005)</b>
P1	1.43 (0.62)	0.95 (0.35)	1.12 (0.71)
P2	1.14 (0.54)	0.97 (0.36)	0.68 (0.46)
P3	1.11 (0.61)	0.92 (0.40)	1.04 (0.56)
P4	0.86 (0.54)	0.90 (0.51)	1.05 (0.50)
<b>All</b>	<b>1.11 (0.60)</b>	<b>0.93 (0.40)</b>	<b>1.00 (0.56)</b>

Järvi et al. (2007) Atmos. Chem. Phys. Discuss., 7, 14265–14294



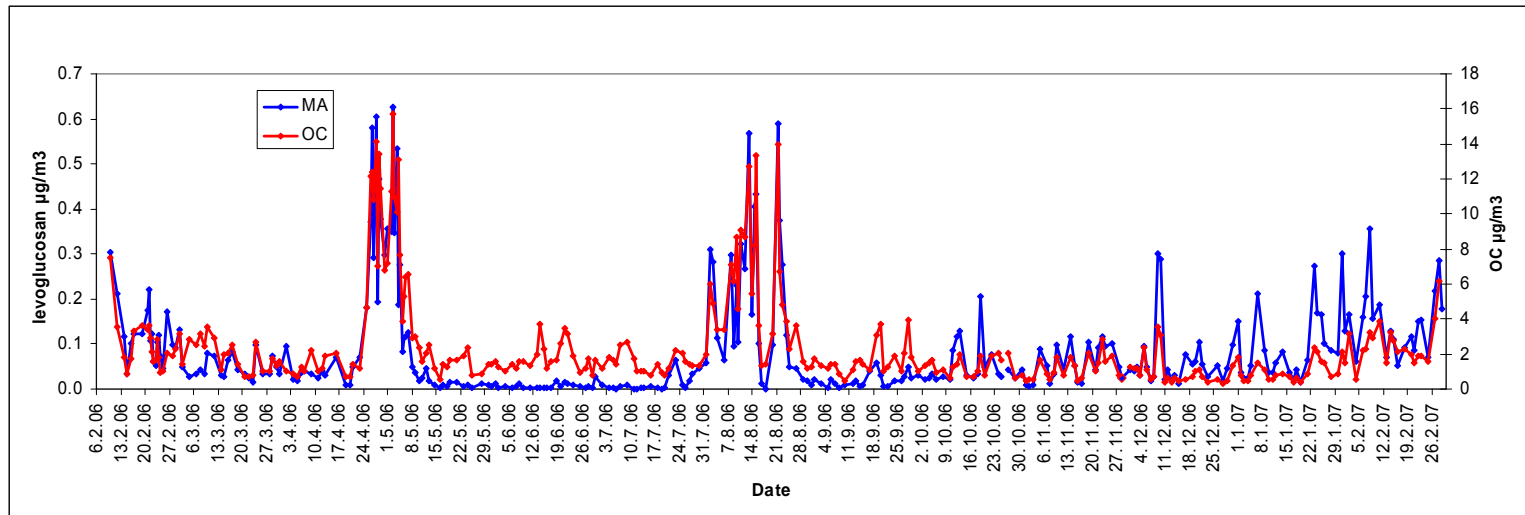
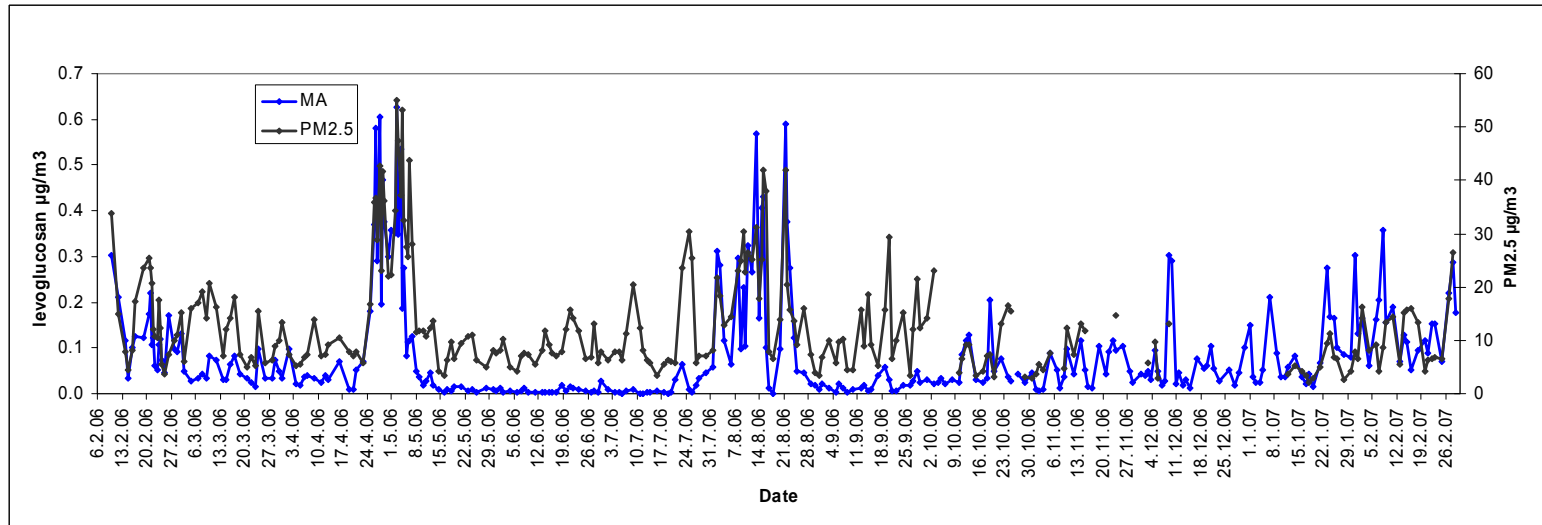
# Traffic intensity vs. BC concentrations



Järvi et al. (2007) Atmos. Chem. Phys. Discuss., 7, 14265–14294



# PM<sub>2.5</sub> from wood combustion and wild fires



MA= monosaccharide anhydrates= sum (levoglucosan+mannosan+galactosan)



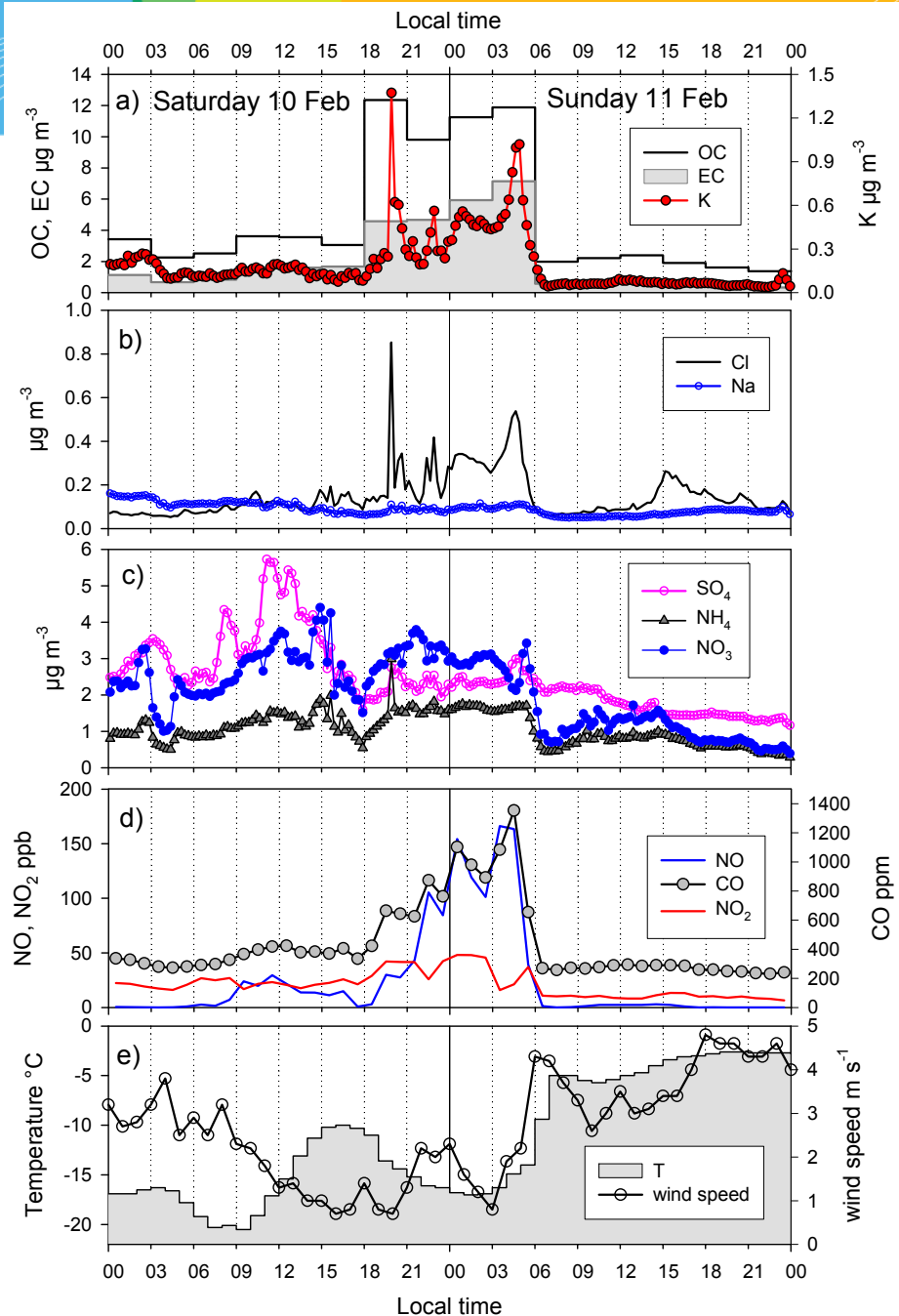


## Wood combustion

### Online measurements of PM<sub>1</sub> chemistry

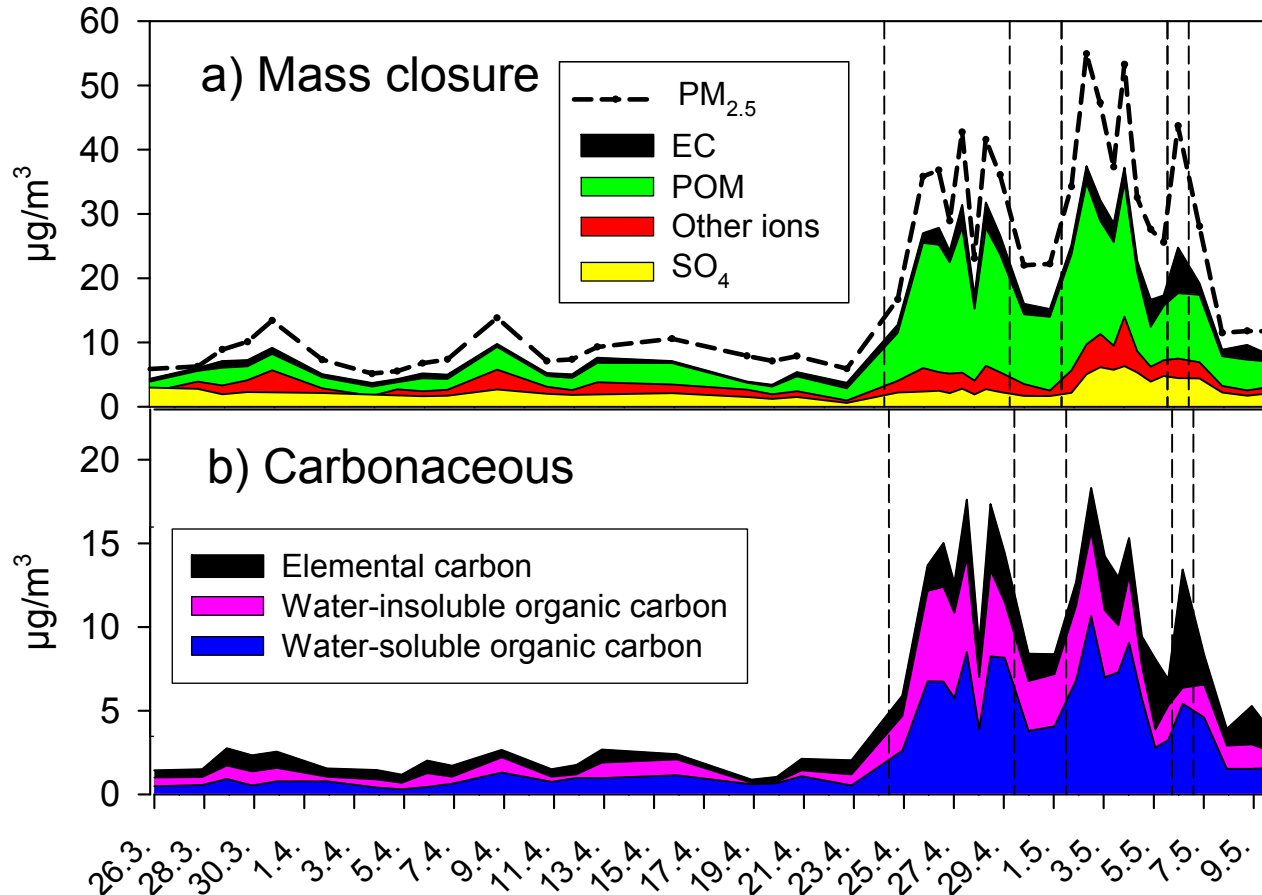
- time resolution 15 min-3h
- 9 months campaign

Saarikoski S. et al., 2008, Atmospheric  
Chemistry and Physics, submitted





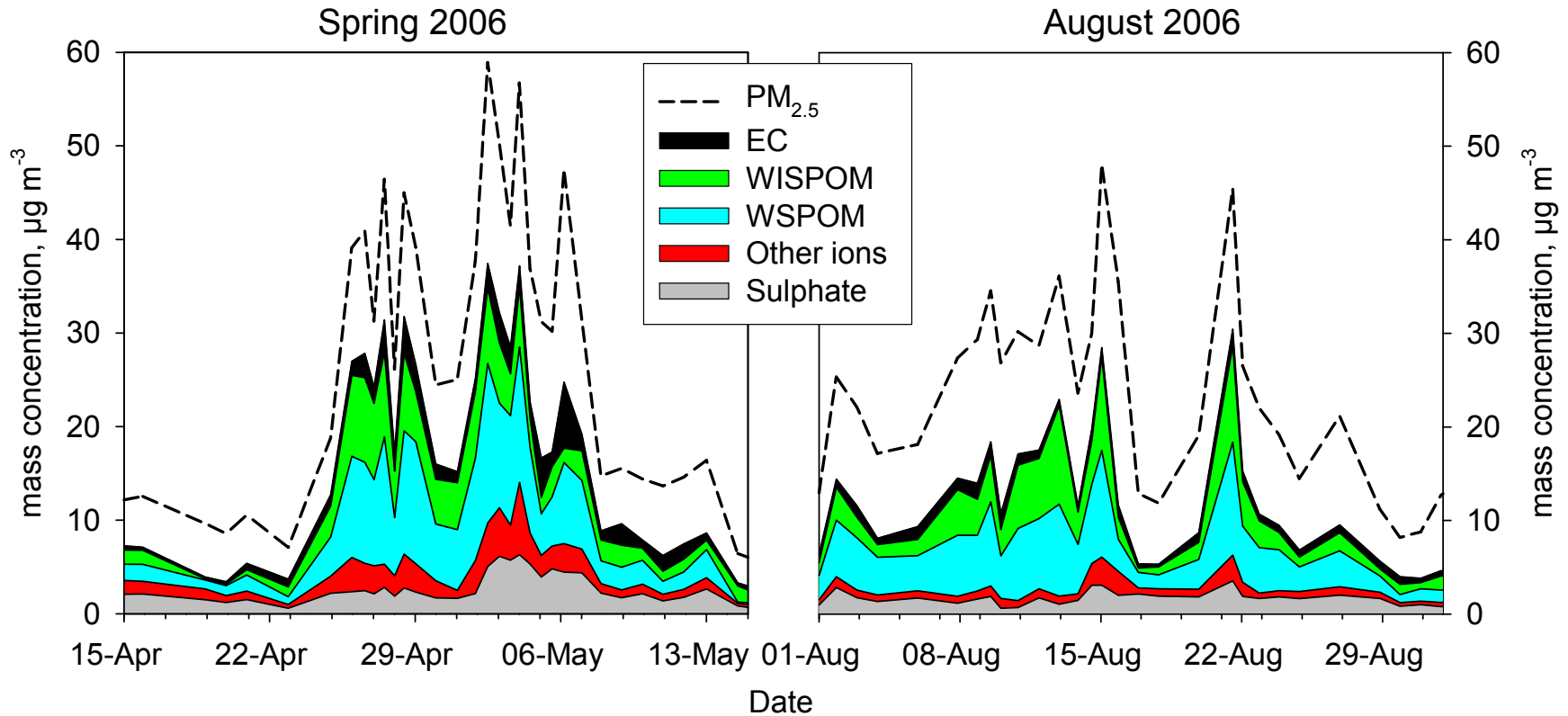
# Wild fire spring 2006: mass closure study



**Saarikoski et al. (2007).** Chemical composition of aerosols during a major biomass burning episode over northern Europe in spring 2006: Experimental and modelling assessments. *Atmos. Environ.* 41:3577-3589.



# From filter sampling

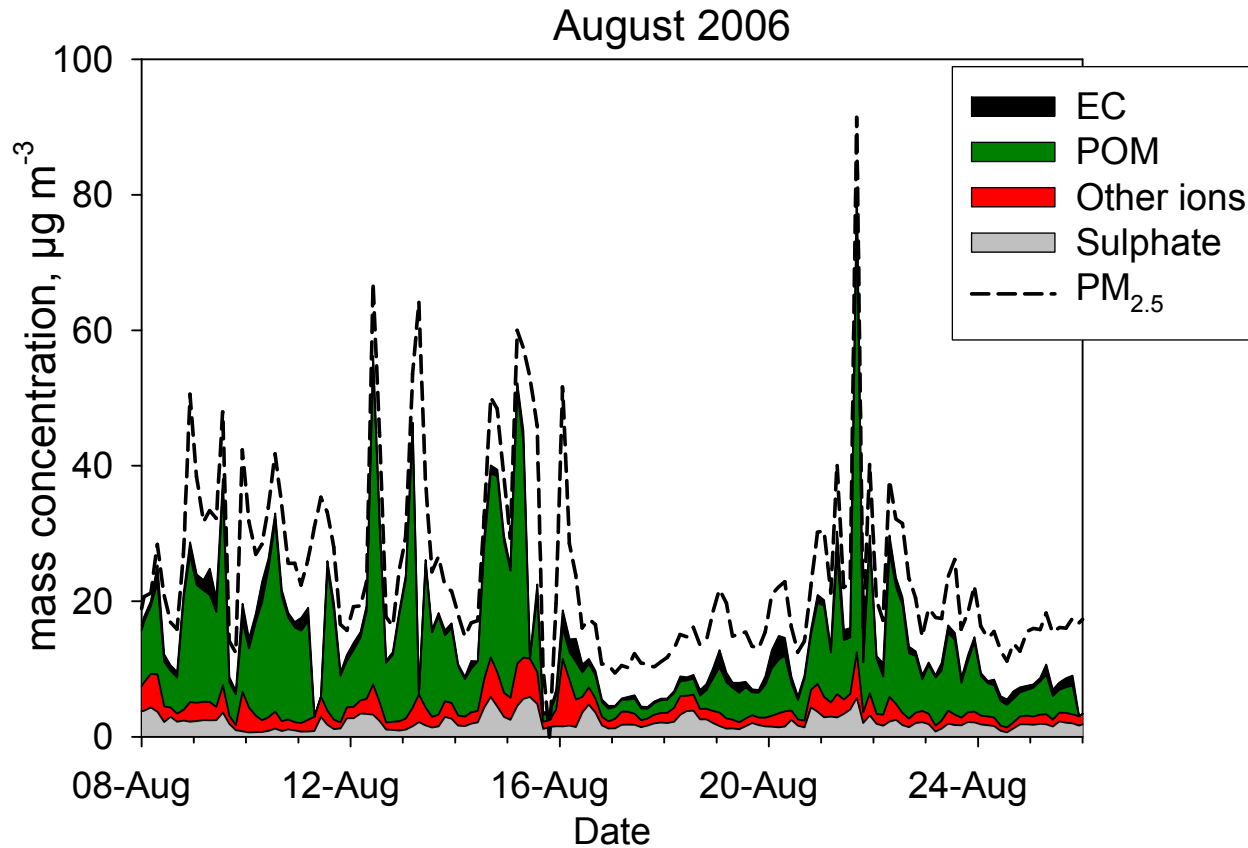


Episode in spring 2006.

Episode in August 2006.



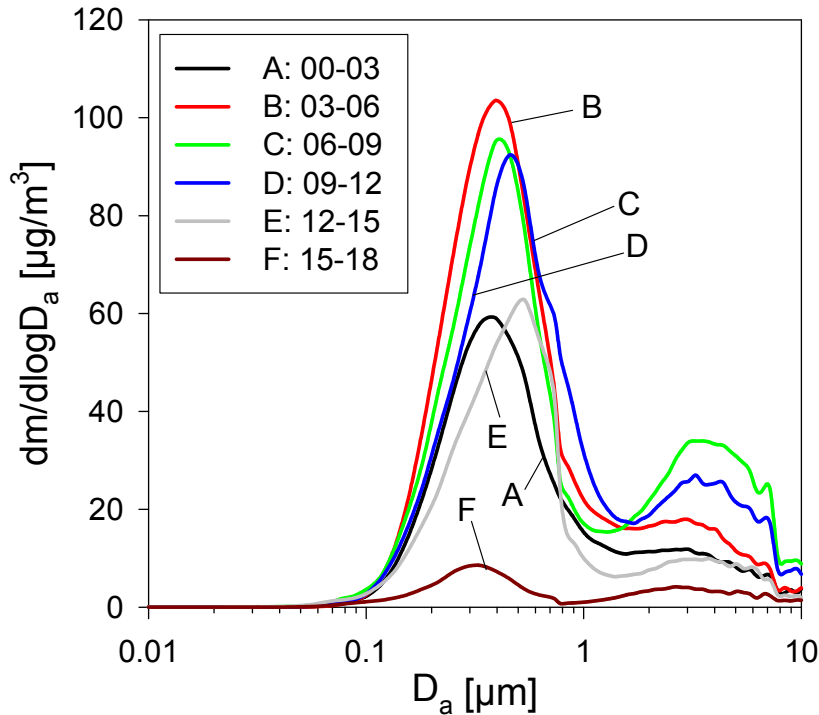
# From on-line measurements



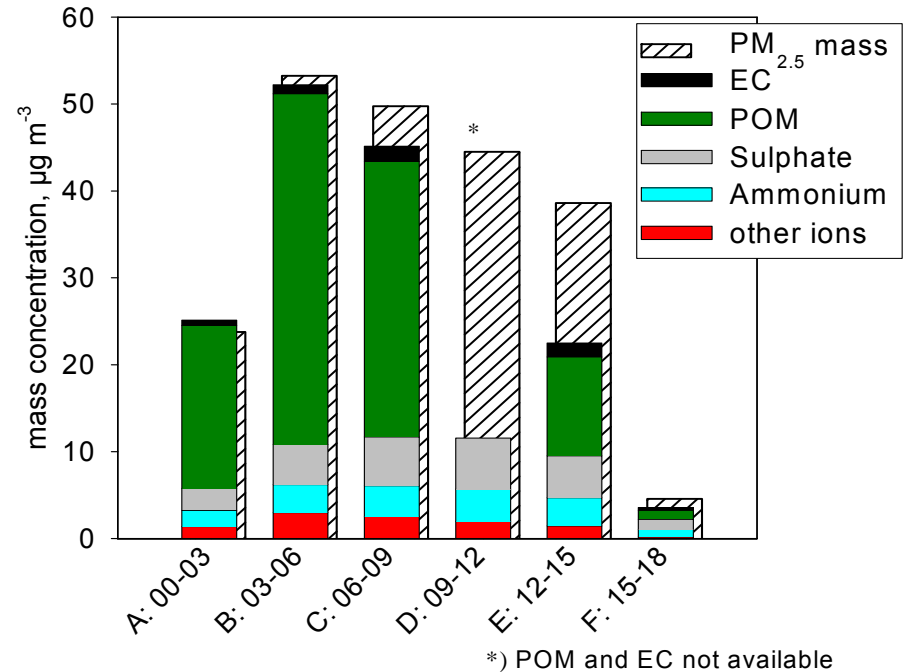
August episode with 3-hour time-resolution



# Wildfire: August 15, 2006



3-hour mass size distributions (A-F) during the progress of the plume on August 15, 2006. (F represents a non-plume situation.)



The PM<sub>2.5</sub> mass and chemical composition of PM<sub>1</sub> on August 15, 2006 with 3-hour time-resolution.



# Biomass burning tracers

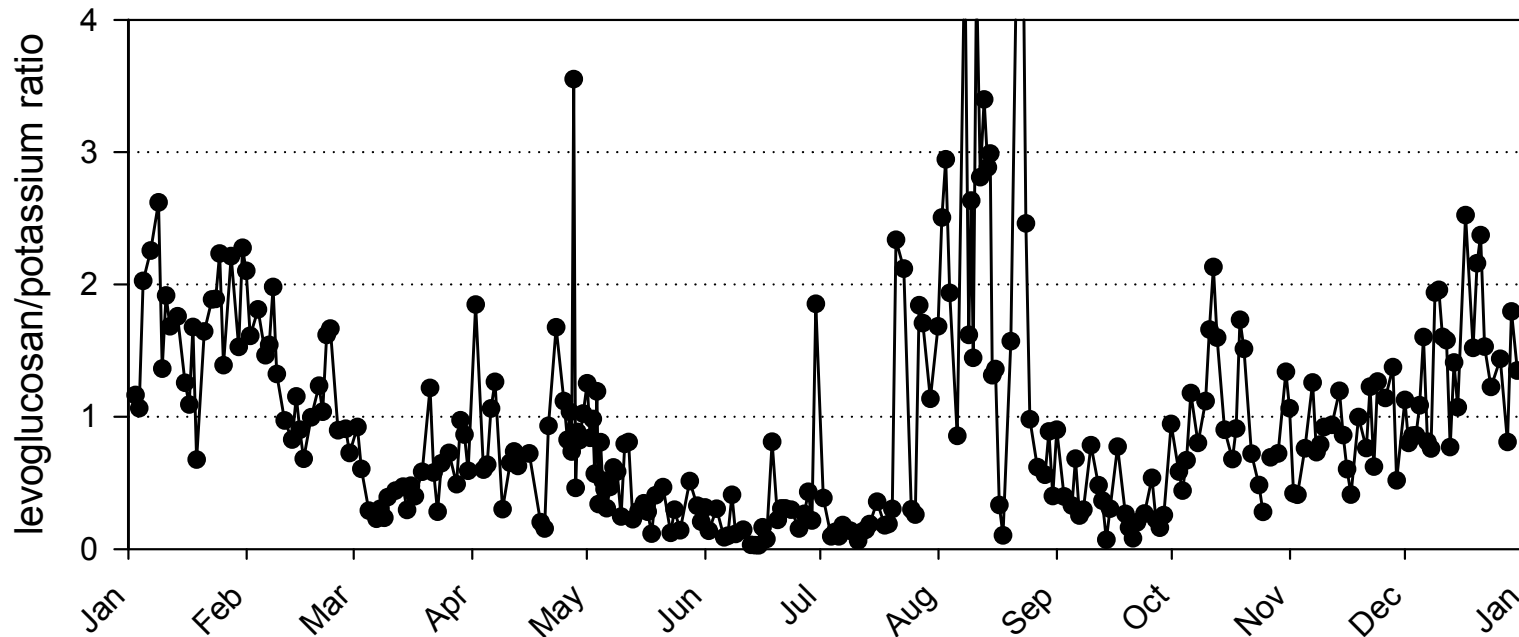
- Spring episode: April 24 – May 7, 2006
- August episode: August 1 – August 28, 2006
- Plume samples have been chosen according to the high content of levoglucosan

	K/Levoglucosan	K/Oxalate	Oxalate/Levoglucosan
<b>Spring episode</b>	<b>1.04</b>	0.85	1.28
<b>August episode</b>	1.02	0.31	5.13
<b>Plumes of August episode</b>	<b>0.32</b>	0.32	1.03
<b>"Non-plume"-samples</b>	1.71	0.29	9.22

**Spring flaming, August plumes smoldering fires**



# Levoglucosan/potassium ratio

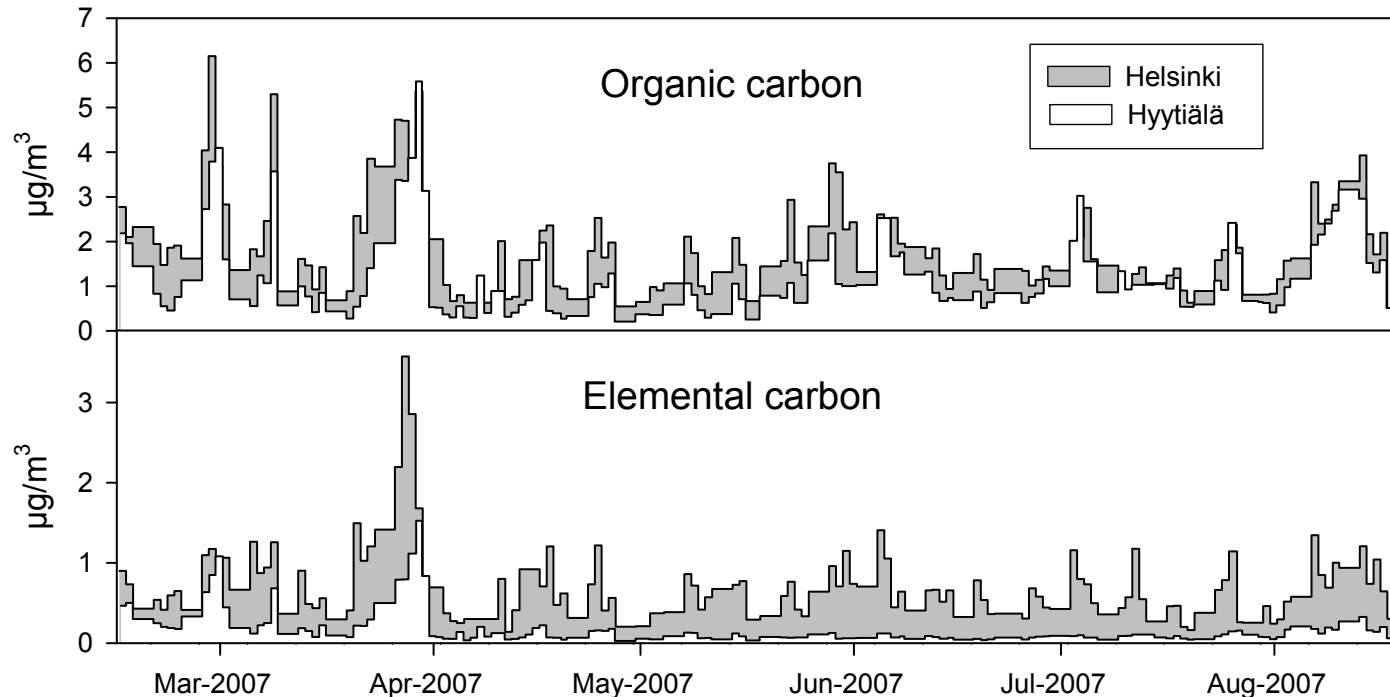


**Levoglucosan better qualitative tracer than  $K^+$**



# Long-term measurements: two sites

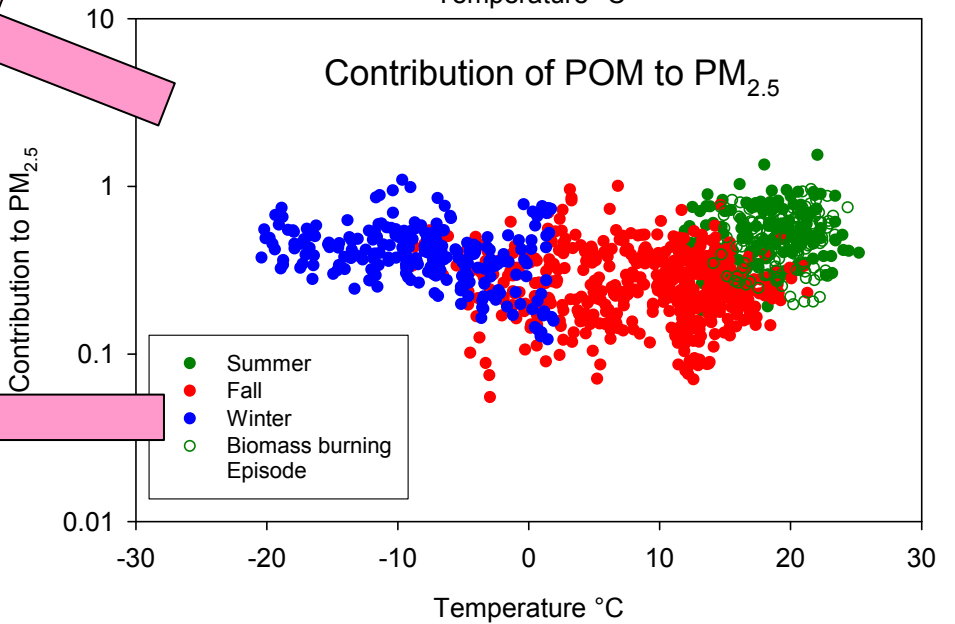
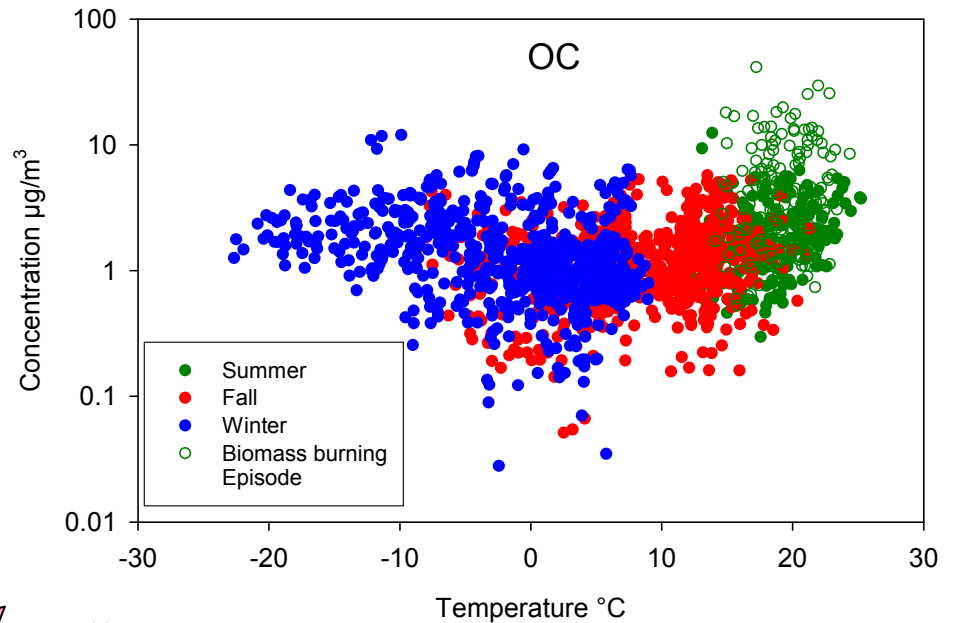
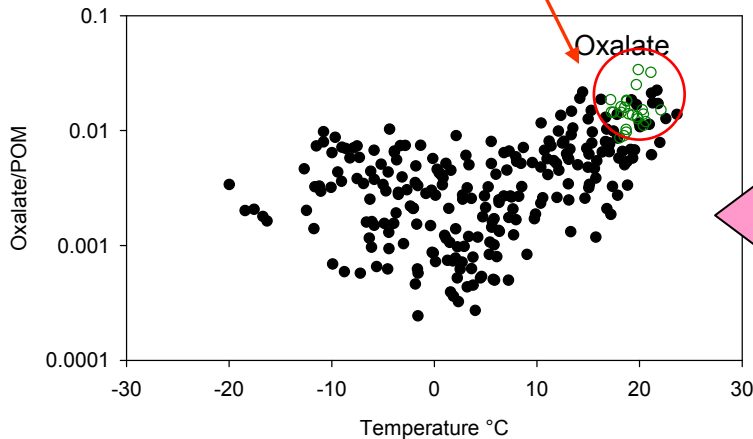
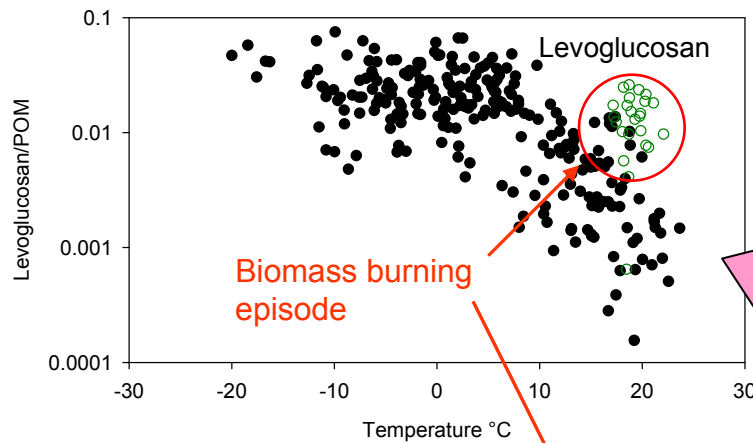
- **PM<sub>1</sub> filter sampling (Feb 07-Feb 08)**







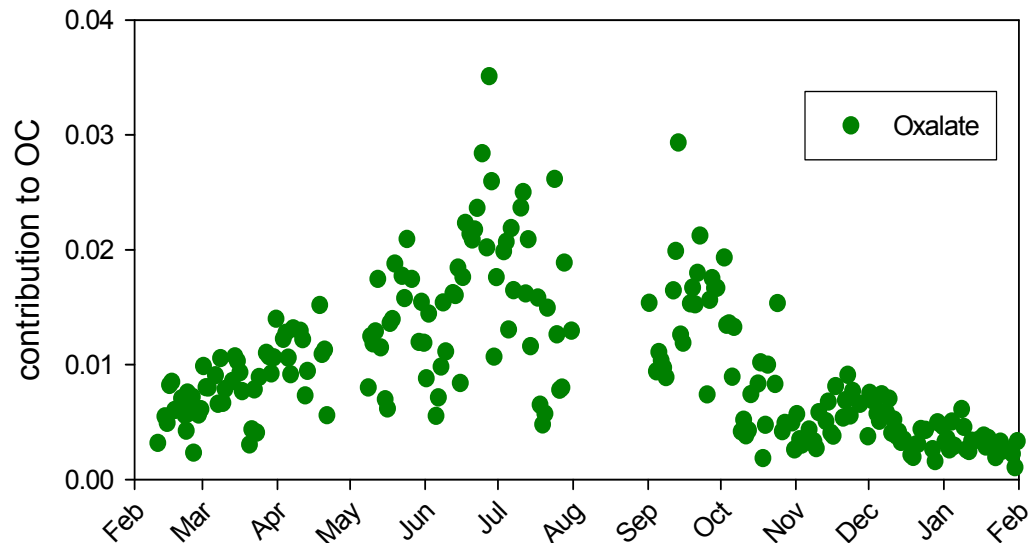
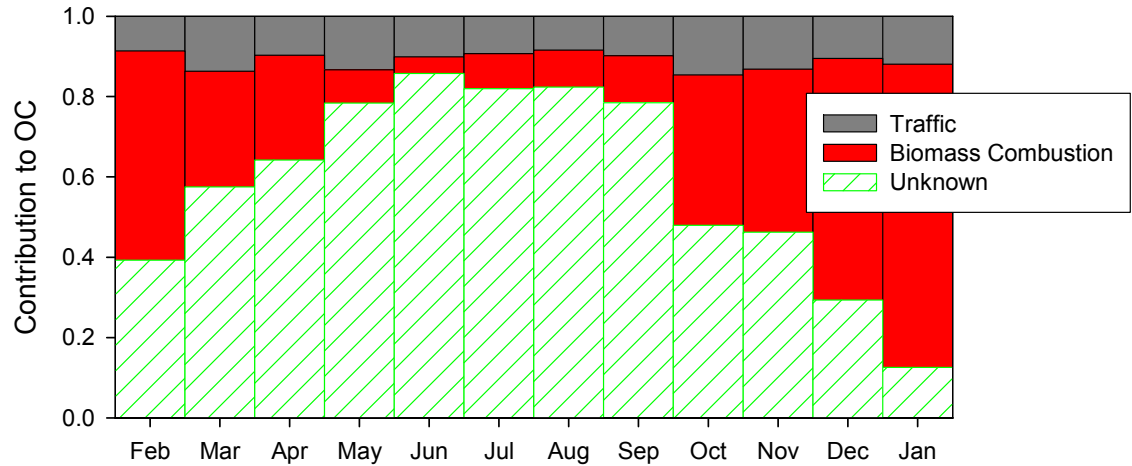
# Seasonal variation in Helsinki: Organic carbon





# PM<sub>1</sub> organic carbon in Helsinki

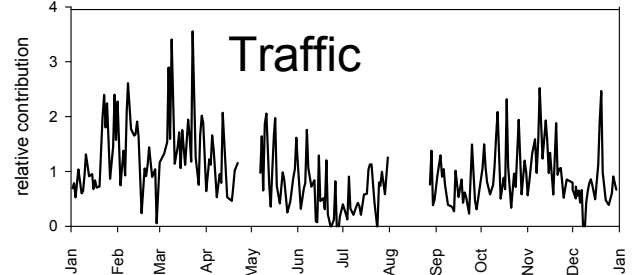
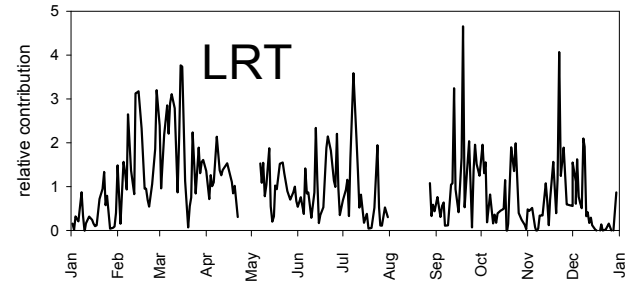
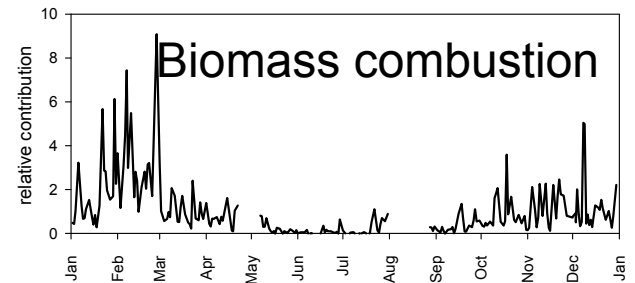
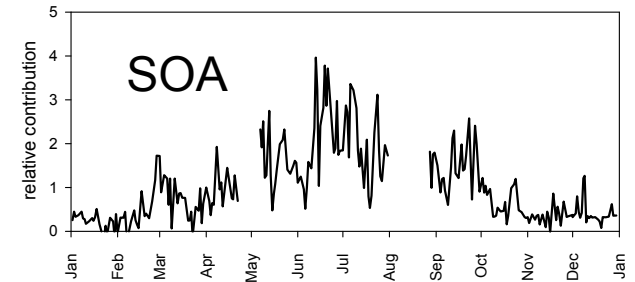
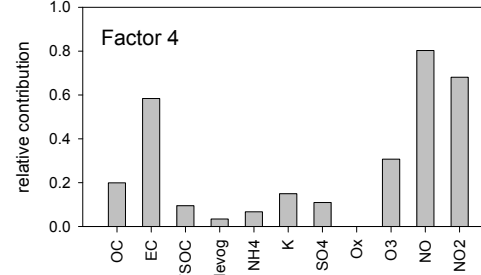
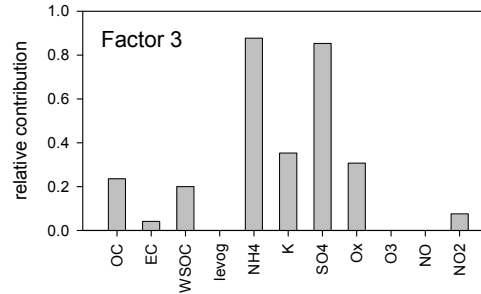
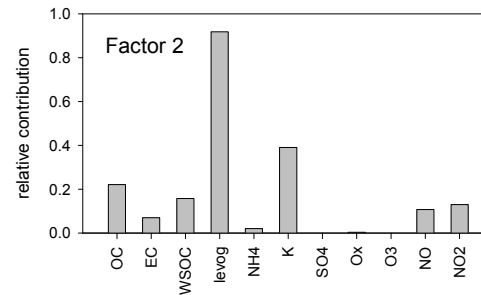
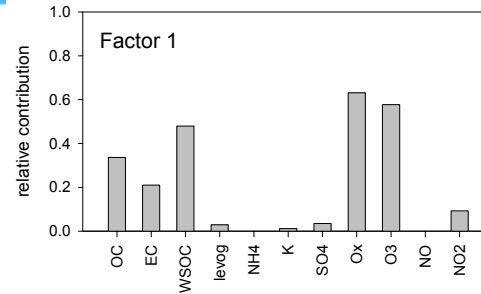
- Traffic (primary) based on EC/OC ratio
- Biomass combustion based on levoglucosan to OC ratio
- Unknown is obviously SOA





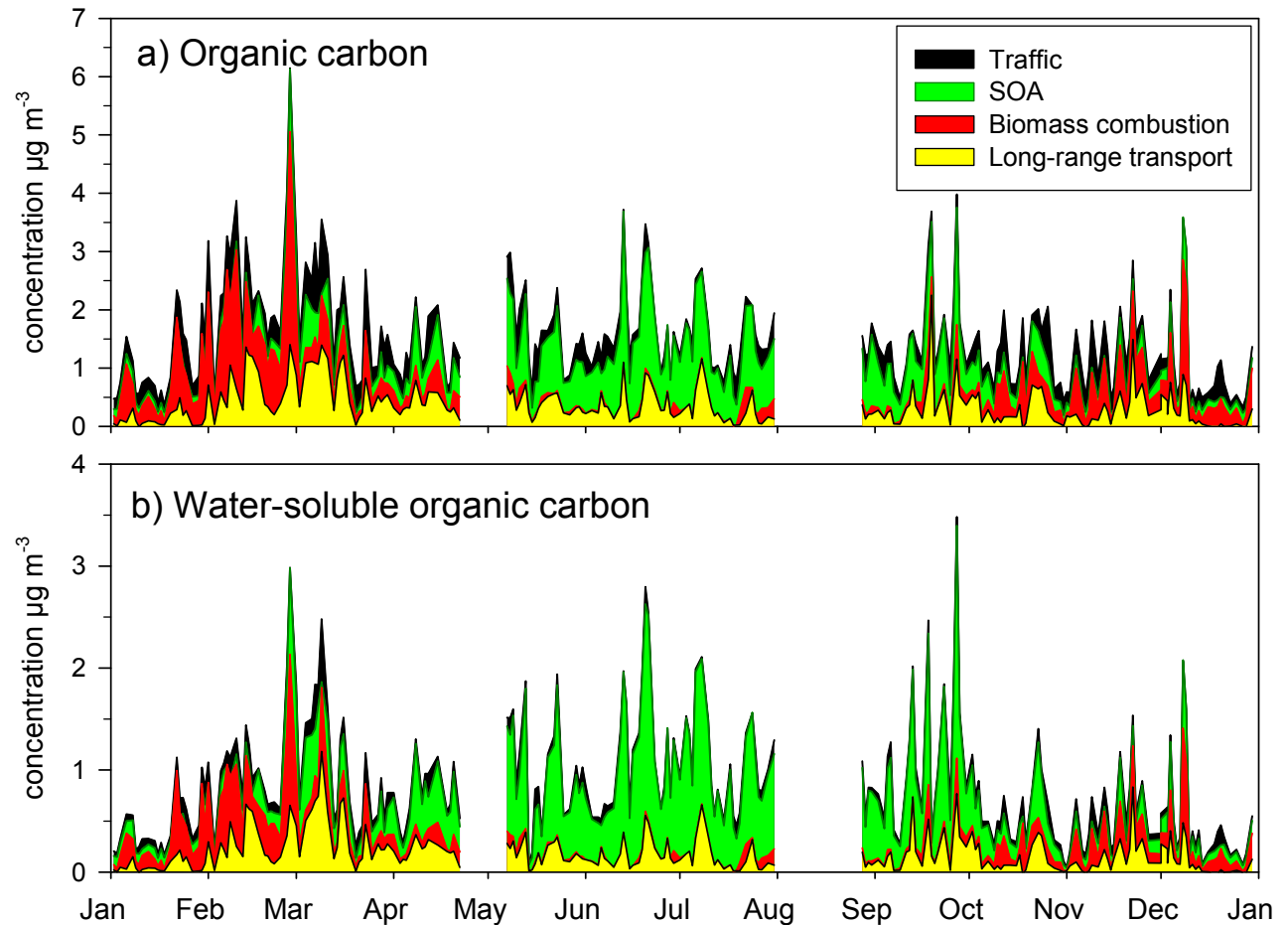
# Sources of PM<sub>1</sub> (PMF)

Saarikoski S. et al., 2008, Atmospheric  
Chemistry and Physics, submitted



# Concentrations from different sources

- $PM_1$  ( $<1\mu m$ )
- 24 h sampling, chemical analysis in laboratory





# Seasonal source contributions in Helsinki

		Winter	Spring	Summer	Fall
% of OC	Secondary organic aerosol	16 ± 11	34 ± 17	<b>64 ± 12</b>	32 ± 18
	Biomass combustion	<b>41 ± 15</b>	12 ± 8.9	3.4 ± 6.0	20 ± 14
	Long-range transport	17 ± 13	29 ± 10	19 ± 11	21 ± 14
	Traffic	26 ± 12	25 ± 13	15 ± 13	27 ± 15
% of WSOC	Secondary organic aerosol	28 ± 18	49 ± 19	78 ± 8.8	47 ± 21
	Biomass combustion	38 ± 16	11 ± 8.1	2.3 ± 4.1	18 ± 15
	Long-range transport	18 ± 14	27 ± 11	13 ± 8.4	20 ± 13
	Traffic	16 ± 8.5	14 ± 9.0	6.6 ± 6.7	15 ± 11

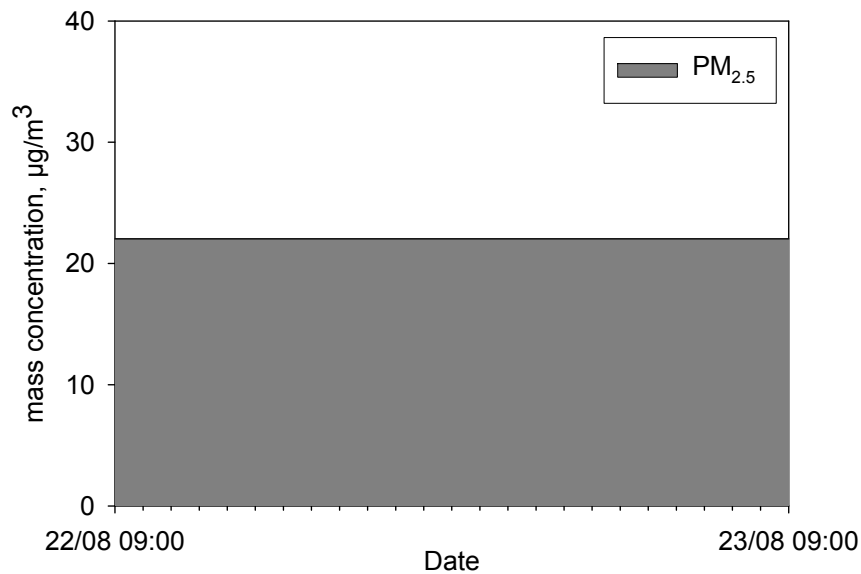
The source contributions for OC and WSOC in winter (Dec–Feb), spring (Mar–May), summer (Jun–Aug) and fall (Sep–Nov) (average ±SD). Sources and their contributions were identified by PMF.

Saarikoski S. et al., 2008, Atmospheric Chemistry and Physics, submitted

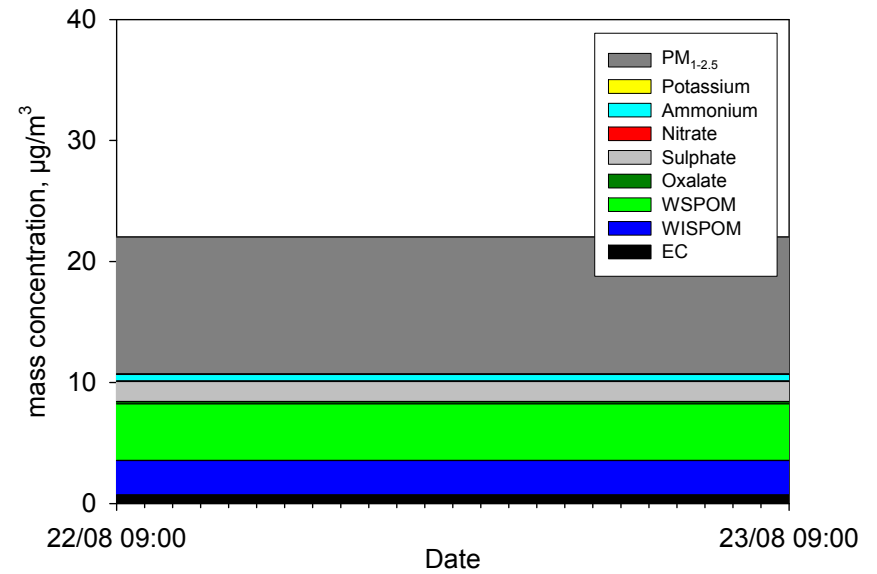


# 24-hour sample

24-hour PM<sub>2.5</sub> sample



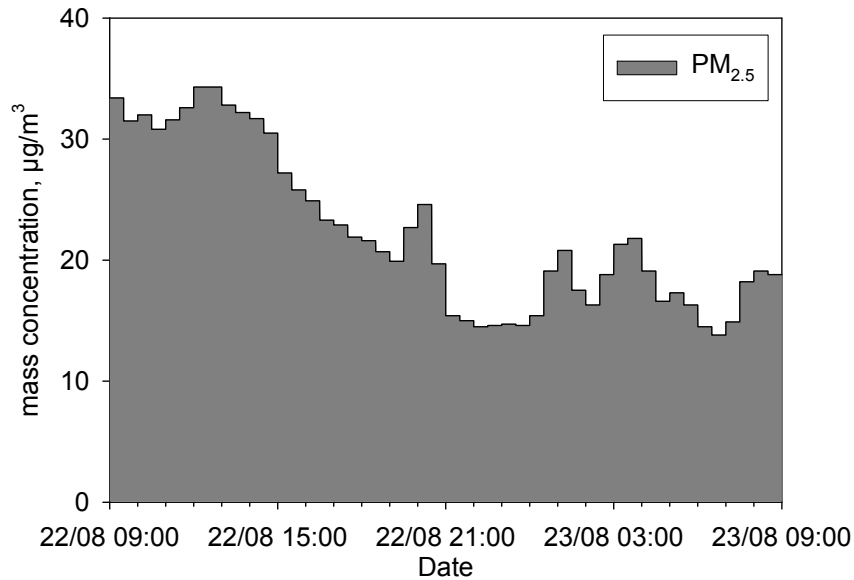
24-hour PM<sub>1</sub> filter sample



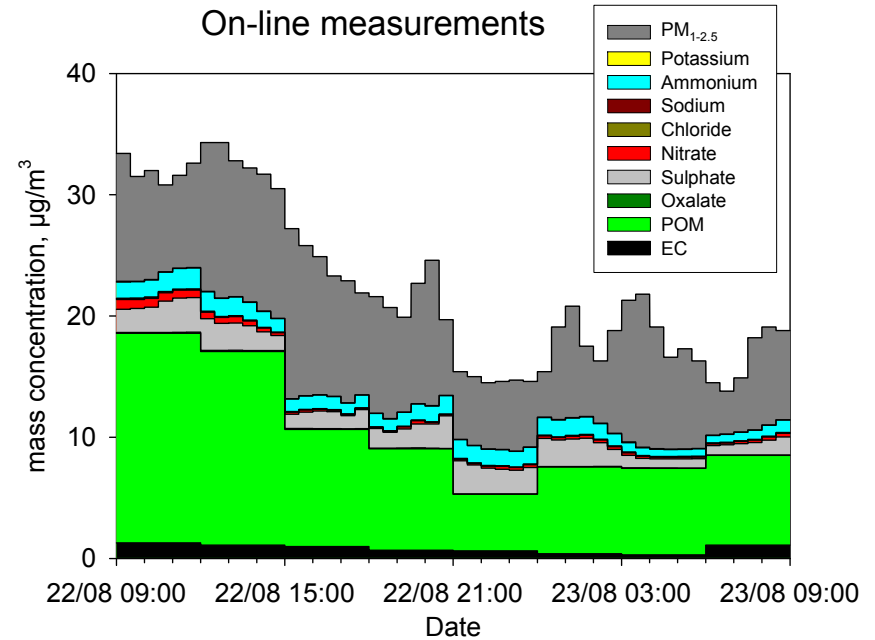


# On-line measurement

On-line PM<sub>2.5</sub>



On-line measurements





# Conclusions

- To assess **PM sources**, a large array of chemical components and physical parameters should be measured on long-term basis
- **Atmospheric particulate matter system highly nonlinear** → decreasing one component may increase concentrations of other components
- Data from **advanced PM measurements** (in a few locations in Europe) is needed in planning the cost-effective abatement strategy for Europe (health effects or climate change concerns)
- **New challenges for the PM studies** due to combustion of biofuels and other efforts needed to reduce CO<sub>2</sub> emissions